

HURLINGHAM POLO ASSOCIATION



Rules 2012

Hurlingham Polo Association
Manor Farm, Little Coxwell
Faringdon, OXON, SN7 7LW

Chief Executive: D J B Woodd Esq

TEL: 01367 242 828 FAX: 01367 242 829

EMAIL: enquiries@hpa-polo.co.uk

WEB: www.hpa-polo.co.uk

Office Hours: 9.00 a.m. - 5.00 p.m. Monday - Friday

Chief Umpire: Robert Graham, Esq
Deputy Chief Umpire: Brigadier Arthur Douglas-Nugent

HURLINGHAM POLO ASSOCIATION RULES 2012

TEAMS AND PLAYERS, SUBSTITUTION, PLAYERS' EQUIPMENT

1. Teams and Players	5
a. Team Composition	5
b. Players	5
c. Entries	5
d. Team Changes	5
e. Handicap Limits	5
f. Player(s) Handicap Raised in the Season	6
g. Withdrawal or Disqualification	6
h. Team Shirts	6
i. Ponies Played by Another Team	6
j. Umpire Ponies	6
k. Handicap Calculation	6
l. Team Captain	6
m. Coaching	7
n. Not Trying	7
2. Substitution	7
a. General	7
b. Captain's Choice	7
c. Chosen Substitute Not Qualified	7
d. No Qualified Player Available	7
e. Handicap of Substitute	7
f. Player Raised in Handicap	7
g. Team Raised in Handicap	7
h. Double Substitution	7
i. Substituted Player May Replace Substitute	8
j. Playing a Three Man Team	8
k. Team Reduced to Three Men	8
l. Effect on the Substitute	8
m. Substitution in High Goal	8
n. Ponies	8
3. Players' Equipment and Turnout	8
a. Headgear	8
b. Spurs	8
c. Breeches, Boots and Kneepads	8
d. Whips	8
e. Goggles	8

PONIES, TACK AND PONY WELFARE

4. Ponies, Tack and Pony Welfare	9
a. General	9
b. Veterinary Cover	9
c. Welfare Officer	9
d. Vaccinations and Pony Passports	9
e. Contagious or Infectious Diseases	9
f. Turnout and Prohibited Tack	9
g. Pony to Be Sent Off	9
h. Pony Not To Be Played	9
i. Shoes and Shoeing	10

j. Medication at Polo	10
k. Water and Muzzles	10
l. Number of Chukkas	10
m. Ponies Used for Umpiring	10
n. Drugs	10
o. Horse Ambulance	10

TOURNAMENT COMMITTEE, UMPIRES AND REFEREES, GOAL JUDGES, TIMEKEEPER/SCORER, AND MEDICAL COVER

5. Tournament Committee	11
a. Requirement	11
b. Duties	11
c. Authority	11
d. Match Not Started or Not Completed	11
6. Report Forms	11
7. Umpires and Referees (See also Annex B)	12
a. Authority	12
b. Referee	12
c. Consultation	12
d. Umpires	12
e. Professional Umpires	12
f. One Umpire	12
g. Dress	12
h. Conduct	12
i. International Matches	12
8. Goal Judges (See also Annex B)	12
a. Requirements	12
b. Goal Scored	13
c. Ball Crosses Back Line	13
d. Instructions	13
e. Back to Back Goals	13
9. Timekeeper/Scorer (See also Annex B)	13
10. Medical Cover	13

GROUNDS, BALL AND ACCESS DURING PLAY

11. The Ground(s) and Field of Play	13
a. Ground(s)	13
b. Field of Play	13
c. Playing Area	13
d. Safety Zone	13
e. Goal Posts	14
f. Boards	14
g. Private Grounds	14
h. Ground Unsafe to Play	14

12. The Ball	14	22. Ball Hit Over Side Line or Boards	18
13. Access During Play	14	23. Restarting After Interval	18
a. Playing Area	14		
b. Safety Zone	14	24. Attacker Hits Behind: Hit In	18
START, DURATION AND END OF PLAY			
14. Start of Play	14	a. Attacker Hits Behind	18
a. Five minute bell	14	b. Hit In	18
b. Line-up and Throw-in	14	c. Foul	18
c. No Redress	14	d. Hitting Before 'Play' is Called	18
		e. Delay by Side Hitting In	18
15. Duration of Play	15	f. Delay by Side Facing Hit In	18
a. Match	15	25. Defender Hits Behind - Penalty 6 (Safety 60)	
b. State of Play	15	a. Defender Hits Behind	18
c. Unfinished Match	15	b. Foul	18
d. Chukka	15	PLAY NOT STOPPED/STOPPED	
e. Intervals	15	26. Play Not Stopped	19
f. Unnecessary Delay	15	a. Advantage Rule	19
16. End of Time	15	b. Lost or Broken Tack	19
a. End of Normal Chukka	15	c. Ball Hits Umpires Pony	19
b. End of Last Chukka	15	27. Play Stopped for a Foul	19
c. Penalty at End of Last Chukka	15	a. Foul	19
d. Foul on the Bell	16	b. No Foul	19
17. Extra Time to Be Played	16	28. Play Stopped for Players' Equipment	19
a. Interval	16	a. Illegal Equipment	19
b. Sudden Death	16	b. Loss of Headgear	19
c. First Chukka	16	29. Play Stopped for Dismounted or Injured Player	19
d. Second Chukka	16	a. Player Dismounted	19
CHANGING ENDS, WRONG LINE UP, SCORING GOALS AND WINNING			
18. Changing Ends	16	b. Player Injured	19
a. After Goal Scored	16	c. Concussion	20
b. No Score at Half-Time	16	30. Play Stopped for Injury to Pony or Dangerous Tack	20
c. Score Level: Widened Goals	16	a. Welfare	20
d. Wrong Line Up	16	b. Dangerous Tack	20
19. Wrong Line Up and Offside	16	c. Request Stop	20
a. Wrong Line Up By Teams	16	31. Play Stopped for Trodden in or Split Ball	21
b. Offside Player	16	a. Trodden In	21
20. Scoring Goals and Winning	16	b. Split	21
a. To Score	16	LINE OF THE BALL, RIGHT OF WAY AND PRECEDENCE	
b. Disputed Goals or Score	17	32. Right of Way and Line of the Ball	21
c. Whistle Blown as Goal Scored	17	a. Line of the Ball (LOB)	21
d. To Win	17	b. Right of Way (ROW)	21
RESTARTING PLAY			
21. Ball Not Out: Throw In	17	c. LOB and ROW	21
a. When Thrown In	17	33. ROW or Precedence Between Players	21
b. Where Thrown In	17	34. Spare	23
c. Position of Teams	17		
d. Play Restarted	18		

RIDING OFF, DANGEROUS RIDING, INTIMIDATION, HOOKING, MISUSE OF WHIP, SPURS AND STICK, ROUGH OR ABUSIVE PLAY		ANNEX B - NOTES FOR OFFICIALS	30
35. Riding Off, Dangerous Riding and Intimidation	23	1. Introduction	
36. Hooking, Misuse of the Stick and Carrying the Ball	23	2. The Referee	
a. Hooking	23	3. The Umpires	
b. Misuse	24	4. Club Welfare Officer	
c. Carrying the Ball	24	5. Timekeeper/Scorer	
37. Rough or Abusive Behaviour	24	6. Goal Judges	
		7. Umpire Grading Committee	
PENALTIES		ANNEX C - GUIDELINES AND CONDITIONS FOR TOURNAMENTS	42
38. Personal Fouls and Technical Penalties	24	1. General	
39. Penalties - General	25	2. Official Tournaments and Priority	
a. Ball in Play	25	3. Other (Not Official) Tournaments	
b. Positioning of the Ball	25	4. International Matches	
c. Circling	25	5. Entry Forms	
d. Delay	25	6. Schedule	
e. Penalty 3, 4 and 6	25	7. Withdrawal or Disqualification of a Team	
f. Behind the Ball	25	8. Knockout Tournament	
g. Wrong Line Up by Defender	25	9. Leagues and Group Tournaments	
h. Wrong Line Up by Attacker	25	10. Round Robin or American Tournament	
i. At end of Chukka	25	11. Penalty Shoot Out	
j. No contact	25	12. Expenses	
40. Penalties - Specific	25	13. Trophies	
a. Penalty 1 - Penalty Goal	25	ANNEX D - RULES FOR LEAGUE AND GROUP MATCHES	48
b. Penalty 2 - 30 Yard Hit	26	1. General	
c. Penalty 3 - 40 Yard Hit	26	2. Order of Merit Within a League All Teams Having Played Each Other	
d. Penalty 4 - 60 Yard Hit	27	3. Order of Merit Within Groups & Leagues in Which All the Teams Have Not Played Each Other	
e. Penalty 5(a) - Hit From the Spot	27	4. Order of Merit Across Leagues and Groups	
f. Penalty 5(b) - Hit from the Centre	27	5. Teams Still Tied	
g. Penalty 6 - 60 Yard Hit - Safety 60	27	6. Placing of Teams for Knockout Phase	
h. Penalty 7 - Throw In	27	7. Match Not Played or Completed	
i. Penalty 10 - Player Sent Off	27	8. Tournament Played Both Open and Handicap	
41. Yellow Flag - For High Goal Only	27	9. Cancellation	
ANNEX A - SUGGESTED LAYOUT OF THE FIELD OF PLAY	29	ANNEX E - STATUS GUIDELINES FOR PLAYERS	54
		ANNEX F - EXAMPLES TO THE RULES	56
		Index to Rules	60

THE HPA RULES FOR POLO

All matches, games and chukkas within the jurisdiction of the HPA are to be played under the HPA's Rules of Polo and the Annexes thereto.

TEAMS AND PLAYERS, SUBSTITUTION, PLAYERS' EQUIPMENT

1. **TEAMS AND PLAYERS.** (See also Annex C – Guidelines and Conditions for Official HPA Tournaments)
 - a. **Team Composition.** A team may have no more than 4 players. Two players may however be paired so that each plays a designated number of chukkas within that team.
 - b. **Players.**
 - (i) **Membership.** No person may play in matches, practice games and chukkas at or conducted by a club affiliated to the HPA in the UK or Ireland unless they are a registered member of a club and the HPA in accordance with Regulation 3.
 - (ii) **Visiting Player.** Any such person visiting a club of which he is not a member will be subject to the same rules of discipline and behaviour that govern the membership of that club.
 - (iii) **Left Handed Players.** No player shall play with his left hand.
 - (iv) **Leaving the Field.** A player may not leave the field of play during the course of a chukka without the permission of the umpires except to change a pony (See also Rule 30c) or a stick or for a legitimate run off.
 - (v) **Appealing.** A player may not appeal in any manner for a foul.
 - (vi) **Dispute and Abuse.** A player may not question or dispute a decision by the umpires at any time by word action or gesture nor may he abuse them.
 - (vii) **Smoking.** No player shall smoke on the ground during a game or match.
 - (viii) **Alcohol and Drugs.** No player may play in any match, practice game or chukka under the influence of any illegal stimulant or drug including any substance referred to in Annex A to the Regulations (Human Doping).
 - c. **Entries.** The team captain or manager must complete an entry form to play in a tournament. The team must be qualified to play in the tournament and the entry form must contain the names of at least three players whose total handicap adds up at least to the minimum handicap of the tournament. Any player who is entered on the entry form or whose name is added subsequently, to be qualified to play must:
 - (i) Be qualified by handicap and status to play in the tournament. (See Regulation 6)
 - (ii) Be a registered member of the HPA and a club with a current HPA handicap. If necessary, a CV form (See Regulations, Annex E) must be forwarded to the HPA at least 3 days before any match. Should the player have an 'S' handicap then that player may only play at a club where he is a member.
 - (iii) Play for one team only in the tournament (but see Rule 2d).

The entry form will contain a declaration which the team captain or manager must sign to the effect that the players nominated on the form or subsequently to be added or changed are qualified to play in the tournament or match and that the handicap and status of the player is correctly recorded.
 - d. **Team Changes.** Should a team captain or manager wish to change or add a player at any time before a match is about to start, he must submit an application to the Tournament Committee. Should the club official responsible be unable to check the eligibility of that player for whatever reason, then that player cannot play. The club official should inform the opposing team of any changes or addition as soon as possible. If the match is about to start or has started, then that player is a substitute (see Rule 2).
 - e. **Handicap Limits.** Certain limits are placed on the handicap of teams and on the players in teams (see Annex C Para 2b and 3a).

- f. **Player(s) Raised in Handicap During the Season.** If the handicap of a player or players in a team has been raised during the season then:
- (i) A high goal (22) team will be allowed to play above the tournament limit by that number of goals but any other team will only be allowed to play one goal over the limit.
 - (ii) A team will not be allowed to play over the handicap limit with a player raised mid season unless that player has either already played with that team or been listed as a member of a team on the entry form for a tournament within seven days of the date when his new handicap became effective.
 - (iii) The same rules as in (i) and (ii) above shall apply as to the handicap limits for individual players. See Annex C.
 - (iv) Any substitution of the player, or players raised must bring the team handicap back to within the limits of the tournament. See Rule 2f and g.
 - (v) The goal or goals awarded on handicap shall be recorded on the scoreboard at the outset.
- g. **Withdrawal or Disqualification.** A team that has entered a tournament may not withdraw once the schedule has been published without the permission of the Tournament Committee which should only be given in exceptional circumstances. A team that pulls out immediately before or during a match without such consent will invoke a charge of misconduct. A Tournament Committee has the right to disqualify a team at any time. (See Annex C para 7 for detail on adjustment of scores).
- h. **Team Shirts.** Shirts will be in team colours with the number of the player no less than 9 inches high and in contrasting colour on the back. Team shirts must be numbered 1, 2, 3 and 4 and not duplicated. Roman numerals are not permitted. Team shirts must not be of black and white stripes so as to be similar to those worn by Umpires. If, in the opinion of the umpires or Tournament Committee, the colours of two competing teams are so alike as to lead to confusion, the team lower in the draw or second named in a league competition shall be instructed to play in another colour. Teams must have available a second set of shirts of contrasting colour.
- i. **Ponies Played by Another Team.** In high and medium goal tournaments, a pony played by one team cannot be played by any other team in the same tournament. This rule also applies to intermediate tournaments except that dispensation may be granted by the Tournament Committee. (See Annex C Para 2b for definition of tournament levels.)
- j. **Umpire Ponies.** Teams are required to provide one pony for umpiring but two for 15 goal Victor Ludorum, 18 goal and above. Ponies must be suitable and fit to umpire the level of the game being played. See also Rule 4f and m.
- k. **Handicap Calculation.** In all matches played under handicap conditions the handicap of each player in each team will be totalled. The lower total will then be subtracted from the higher and the resulting difference will be multiplied by the number of chukkas to be played in the match and divided by 6. This will give the number of goals to be given to the team with the lower total handicap. All fractions will count as half-a-goal. See Annex B Paragraph 5c(i).
- l. **Team Captain.**
- (i) **Appointment.** A captain will be appointed by each team. The umpires should identify the captain before the start of any match.
 - (ii) **No Appeal.** The team captain or the team manager may not appeal against the appointment of any particular umpire, referee or other official nor against the time or venue of a game.
 - (iii) **Clarification of a Decision.** The Umpire should announce the foul, the player that has fouled and the penalty. No player may ask an umpire for clarification of a decision.
 - (iv) **Report Form.** A team captain may complete a report if he considers that the Tournament Committee have acted improperly or that the umpires have failed in their duties. In the latter case the form must be signed by a second member of his team and be accompanied by substantial evidence such as a DVD or signed statements. The report must be submitted to the Tournament Committee within 12 hours from the end of the match (See Rule 6).

- m. **Coaching.** Coaching of players by radio or during play from the sidelines is forbidden
- n. **Not Trying.** Both teams in a match must try to win. If in the opinion of the umpires or the referee or the Tournament Committee, a team is believed to be not trying, the team should be warned by the umpires. If the team fails to comply with this instruction, the umpires shall submit a report form. The team or individual players may be subject to a Disciplinary Enquiry by the Tournament Committee who may take any action considered appropriate, including the suspension of the team and its members from playing in the rest of the tournament. If it is considered appropriate by the Tournament Committee to refer the matter to the HPA, the team will be suspended pending adjudication by the HPA.

2. SUBSTITUTION

- a. **General.** In order to start a match with each team having 4 players or to finish it, certain modifications to Rule 1 as detailed below are permitted. If a match is about to start or has started and a player is late or unable to play through accident, sickness or duty, he may be replaced by a substitute. The substitute must be qualified (see Rule 1c and Rule 2d) to play in the tournament and the team must remain qualified after the substitution has been made (see also Rule 29b).
- b. **Captain's Choice.** The Tournament Committee, having been satisfied that there is a genuine need for a substitute, will ask the captain of the team requiring the substitute for his choice.
- c. **Chosen Substitute Not Qualified.** Should the chosen substitute not be qualified, the Tournament Committee must establish if there is another qualified substitute readily available. This is to include a player of the same handicap or one goal less than the player he will replace.
- d. **No Qualified Player Available.** If no qualified player is readily available, the Tournament Committee may agree to a player being used who has played or be due to play in another team. (see Rule 2a) A player who is no longer in the tournament should play in preference to one who is still in it. The Tournament Committee may authorise an OSP to substitute for an EU player if no qualified EU player is available.
- e. **Handicap of Substitute.** If the substitute is of the same handicap as the player he has replaced or lower, then the score will not be altered. A team whose total handicap was below the upper limit of the tournament is not obliged to take a substitute of a higher handicap. However, if they choose to do so, up to the tournament limit, then the score will be altered immediately to reflect the increased total handicap of the team irrespective of when the substitution occurs.
- f. **Player Raised in Handicap.** A player whose handicap has been raised mid season may not play as a substitute if the team's total handicap thereby exceeds the tournaments limits, or to that to which it was raised by a second member of the team whose handicap was also raised mid season.
- g. **Team Raised in Handicap.** If a team is playing above the handicap limit of a tournament by virtue of including a player or players raised in handicap during the season, and one or both of those players has to be substituted during a match, any substitution must be on the basis of the original handicap of those players before they were raised. However, if another player in that team is substituted, the original total handicap of the team may stand.
- h. **Double Substitution.** If a player is injured so that he cannot continue to play and, even though a qualified substitute may be available, a team may choose to make a double substitution. The injured player may be replaced by a player of a lesser handicap and another player on the team may be replaced to bring the team back to its original level (but see Rule 2f). Both substitutes must be qualified and therefore must not have played or be due to play in the tournament.

- i. **Substituted Player May Replace Substitute.** A substituted player may replace his substitute at the start of but not during any chukka. Should the substitute have been of a higher handicap so that the score was altered it shall not be changed again. If the substitute was of lower handicap and had started the match so that his handicap was shown within the team total then the score will be altered if the substituted player joins the team.
- j. **Playing a Three Man Team.** If a player is late or unable to play as a match is about to start, then a team may play with three players but the team aggregate handicap must remain within the tournament limits. The team will start with the aggregate handicap of the three players. If the fourth player or his substitute subsequently joins in, which he may do only at the start of but not during a chukka in the match, the handicap of the team will be recalculated to include the handicap of the joining player if one goal or above and the score board altered accordingly in favour of the opposing team. If the joining player's handicap is 0 goal or below then no alteration will be made to the score.
- k. **Team Reduced to Three Men.** A team may be reduced to three men under Rule 29b (ii) (no qualified substitute for injured player) or Penalty 10 (player sent off) in which case it may play with an aggregate handicap below or above the limits of the tournament. But, in the event of a subsequent substitution, the handicap of the injured or sent off player must continue to be included in the calculation when judging the eligibility of the substitute.
- l. **Effect on the Substitute.** A player who has substituted for another under Rule 2d should not be disqualified from continuing with his original team, or from joining another team if he is not already in one. He may also continue to play in the team in which he has played as a substitute if the original player is still not available and his own team is no longer in the tournament.
- m. **Substitution in High Profile Matches.** See Annex C paragraph 2d.
- n. **Ponies.** It is the responsibility of the team to mount the substitute.

3. PLAYERS EQUIPMENT AND TURNOUT

Players are expected to be well turned out so that the reputation of the sport is enhanced. Any equipment that has sharp projections which might cause injury to another player or pony is forbidden. Umpires have a responsibility to ensure that spurs and whips are in accordance with the rules. A report form should be completed for any breach so that there is a record in case of repetition at another club. (See Rule 6c(v) and 28a.)

- a. **Headgear.** When riding on a polo grounds (which includes the surrounds) everyone must wear protective headgear with the chinstrap or harness correctly fastened. (See Note 1.)
- b. **Spurs.** Spurs, including any rowel must be blunt, with the shank of no more than 1.25 inches (3 cm) pointing downwards and to the rear. Any spur likely to wound a horse is forbidden.
- c. **Breeches, Boots and Knee Pads.** For matches white breeches or jeans and brown boots with knee pads are to be worn.
- d. **Whips.** Whips must not be more than 48 inches long including any tag. Broken whips are not allowed.
- e. **Goggles.** Goggles are recommended.

Note 1: It is recommended that players take note that the British Horse Society recommends "that hats which comply with PAS 015, BS EN 1384, EN 1384 (providing it has a CE mark), ASTM F1163 or Snell E2001, with either the Kitemark or SEI offer the best protection".

PONIES, TACK AND PONY WELFARE

4. PONIES, TACK AND PONY WELFARE

- a. **General.** The overall responsibility for care and welfare of a pony rests at all times with the owner. The Stewards, Tournament Committee and match officials have a duty to enforce the Rules and may call in veterinary advice (see also Regulation 4.3a(ii)). Additional matters on the welfare of ponies, particularly on serious injury and the administration of drugs, are covered in Rule 30a and Annex B of the Regulations. See also HPA booklet 'Polo Pony Welfare Guidelines'.
- b. **Veterinary Cover and Use.**
- (i) A veterinary surgeon who is a practising Member of the Royal College of Veterinary Surgeons (MRCVS) must either be present or on immediate call at all matches played within the tournaments listed in the Fixture List 2012. In addition a nominated club official should be in attendance at all matches and practice chukkas arranged by the club to deal with welfare issues.
 - (ii) The 1966 Veterinary Surgeons Act lays down that within the UK any activity described as 'veterinary surgery' can only be carried out by a MRCVS or FRCVS except that a veterinary surgeon on occasion may delegate some veterinary tasks, such as minor surgery or medical procedures, in particular, to a registered veterinary nurse. Without such authority no one except a MRCVS may carry out any form of veterinary surgery on a pony.
- c. **Welfare Officer.** Every club must appoint a Welfare Officer to be responsible for all aspects of pony welfare particularly in the pony lines. The umpires have the main responsibility for pony welfare on the field of play. (See Annex B para 4)
- d. **Vaccinations and Pony Passports.** All ponies must have by law, a passport which may be obtained through the HPA. Each horse must also have a valid vaccination certificate, which undeniably relates to the horse, completed, signed and stamped on each line by a veterinary surgeon, who is not the owner of the animal. It must state that the horse has received two injections for primary vaccination against Equine Influenza given no less than 21 days and no more than 92 days apart. Thereafter, booster injections must be given annually. The first injection for primary vaccination must have been given before the horse may play at any club or in any tournament.
- e. **Contagious or Infectious Diseases.** Any pony owner, stable manager or polo club which has a suspected case of a contagious disease such as ringworm or an infectious disease such as strangles or equine herpes must inform the HPA immediately with details of the action being taken. No infected pony or others in contact will be brought to a polo ground until clearance is given by a MRCVS.
- f. **Turnout and Prohibited Tack.** Ponies are expected to be well turned out and poor or badly fitted tack is not allowed (see note for best playing or turned out pony). Each pony must be protected by bandages or boots on all four legs and it must have its tail put up. Any equipment that has sharp projections which might cause injury to the pony or any other pony or player is forbidden. Ponies for umpiring should be equipped for polo except their tails need not be put up. The following are not allowed to be used during any game:
- (i) A noseband, headpiece or headcollar which incorporates wire or any sharp material.
 - (ii) A hackamore or bitless bridle (may be used in practice chukkas at the discretion of the club).
 - (iii) Blinkers or any form of noseband or other equipment which obstructs the vision of the pony.
 - (iv) The mouthpiece of any bit, whether single or double, of not less than 0.25 inch (6.50 mm) in diameter at its narrowest point.
 - (v) The total cheek length of a curb bit may not exceed 6 inches (15.2cms).
 - (vi) A tongue tie unless inspected by a MRCVS immediately prior to the chukka. The tongue tie must be removed as soon as the pony leaves the field of play.
- g. **Pony to Be Sent Off.** (See also Rule 6c and 30a) A pony suffering from the following conditions during play must be sent off immediately if:
- (i) Lamé
 - (ii) Showing signs of distress
 - (iii) Not under proper control or showing vice
 - (iv) Showing blood from the flanks or any other part
- h. **Pony Not To Be Played.** (See also Rule 6c.) A pony may not be played if:

- (i) Blind in either eye
 - (ii) It has any form of open tracheotomy (tubing)
 - (iii) De-nerved (chemically or surgically desensitized). If desensitized temporarily then it must wait until full sensation has returned.
- i. **Shoes and Shoeing.** The Farriers' Registration Act of 1975 states that any person who shoes a horse, including their own, must be a farrier registered with the Farriers Registration Council. Ponies should therefore only be shod by such a farrier. Frost nails, road studs, screws and fancy spikes or any protruding nails or sharp edges on a shoe are not allowed except as below:
- (i) Rimmed shoes may be worn but the rim must be on the inside of the shoe only.
 - (ii) A calkin or stud must be of less than 0.5" (13 mm) cubed, or hexagonal, and must be fitted on the last inch (25mm) of the outside heel of the hind shoe. A non-slip plug or road plug may be fitted. A plug is sunken into the shoe by a farrier and is not to be confused with any form of stud.
 - (iii) If a shoe has a calkin or fixed stud it must be balanced by a raised and feathered inside heel tapered for a minimum of 1.5 " (40 mm).
 - (iv) A removable stud, which is the type strongly recommended, should be removed before the pony leaves the grounds.
 - (v) A pony may be shod with a maximum of two road nails or non-slip nails per shoe in order that it may be exercised safely on the roads. Such nails must not be on the widest part of the shoe.
 - (vi) A pony may be played without all four shoes or without hind shoes. Should this lead to the pony not being under proper control so as to be a danger to itself or others then it should be ordered off by the umpires. (See also 30a iv.)
- j. **Medication at Polo.** A pony which has been medicated by any route (by injection or ingestion) at polo may not play thereafter that same day. The only exception is if a minor and unobtrusive injury or wound is treated or repaired including using a local anaesthetic to a part of a pony that will not affect its performance and the pony is then passed fit to play by a MRCVS.
- k. **Water and Muzzles.** Clubs must ensure that fresh or running water is readily available at all pony and horsebox lines. Water should not be withheld for an extended period and should be offered to ponies after they have played. Muzzles should only be used for short periods to prevent a pony from feeding. They must not be adapted in any way to reduce the ability to breathe or drink.
- l. **Number of Chukkas.** In the normal duration of a match, a pony must not be played for more than two full non consecutive chukkas, or the equivalent time; a pony which has played in more than half a chukka may not be played again for at least ten minutes. A pony must not be played in more than three full chukkas or the equivalent time in any one day. Should a match go to extra time then a pony that has played two chukkas may be played for as much time as the extra chukka lasts providing it has had a break of at least ten minutes. A pony must not be played in more than three full chukkas or the equivalent time in any one day or at more than two locations.
- m. **Ponies Used for Umpiring.** A pony that has played in a match at 8 goal level or below may be used as an umpire pony if it has had a break of at least one chukka or vice versa. Above 8 goal, any pony that has played in a match should not subsequently be used as an umpire pony or vice versa. (See also Rule 1j.)
- n. **Drugs.** The administration to a pony of any drug or substance that is not a normal constituent of horse feed or is not listed as permitted in Annex B to the Regulations is prohibited.
- o. **Horse Ambulance.** Either a trailer with motor vehicle attached or a low loading lorry each with ramp equipped with a winch and screens must be available near to the ground at all times during play. Clubs should practise the procedure from time to time. As well as a winch and screens the horse ambulance should carry ropes, a drag mat, a spare headcollar, a tarpaulin, a bucket of sand and a knife for slitting saddlery.

Note. Best Playing or Turned Out Pony. Clubs are encouraged to award a prize for the best playing or best turned out pony. They must however ensure that the pony is in a fit state to collect its prize - i.e. that it is not distressed, looks well and does not have spur or whip marks, a cut mouth, sore back or any other signs of ill treatment. If a pony has received an accidental injury, such as a tread, then it should not be excluded from collecting its prize, provided that the injury has been properly treated. If a veterinary surgeon is present he should be asked to inspect the pony prior to the presentation.

TOURNAMENT COMMITTEE, UMPIRES AND REFEREES, GOAL JUDGES, TIMEKEEPER/SCORER AND MEDICAL COVER

5. TOURNAMENT COMMITTEE.

- a. **Requirement.** For any tournament the host club will appoint a Tournament Committee of three or more individuals, who preferably should have no vested interest in the outcome of the event. In the absence of a Tournament Committee, the Polo Manager of the Club or his representative with the umpires and referee shall act as the Tournament Committee.
- b. **Duties.** The Tournament Committee will be charged with the overall responsibility for the running of the tournament (see Rule 1 and Annex C). This will include;
 - (i) checking the eligibility of each entry and any subsequent substitution.
 - (ii) informing a team of a change in the entry of an opposing team.
 - (iii) structure of the tournament and the draw.
 - (iv) scheduling of matches.
 - (v) appointment of officials (see Rule 7e and Annex C Paragraph 2e and 3).
 - (vi) provision of the grounds and the necessary equipment.
 - (vii) overseeing, through the Club Welfare Officer, the welfare of ponies in particular their condition, shoeing and watering (see Rule 4).
 - (viii) dealing with any disciplinary matters or irregularity.
 - (ix) determining an order of merit (see Annex D).
- c. **Authority.** The Tournament Committee has authority over all matters pertaining to the Tournament. This will include jurisdiction over any offence committed within the Ground (see Rule 11a), except that the authority of the referee and the umpires will be absolute immediately before, during and immediately after the game on matters regarding the conduct of play.
- d. **Match Not Started or Not Completed.** On occasion, normally as a result of inclement weather, a match may be cancelled or postponed. If possible, the decision should be taken in time so that teams do not travel but if they have arrived at the ground then the Tournament Committee, having consulted the team captains, shall make the decision on whether to start the match. If started then the responsibility rests with the umpires as to whether the match should be stopped or not, again having consulted team captains. If possible, the match should be started or restarted as soon as conditions improve but, if not, the Tournament Committee must decide there and then with the two captains a date, time and location for the match to be played or completed to fit in with the overall tournament schedule. (See Rule 15c and Annex D paragraph 7). Consideration should be given to a Penalty Shoot Out (See Annex C para 11) if it is clear that the match cannot be started or completed.

6. REPORT FORMS

- a. Report Forms will be distributed to every club by the HPA and must be held by the Polo Manager. A Report Form shall be filled in by an official such as an umpire or referee or by a team captain (see Rule 11 (iv)) immediately after the game has finished to record any irregularity before, during or after play. The form shall be completed in full and signed by those officials or the team captain and one other member of the team submitting the report.
- b. Once completed and signed, the top copy will be sent to the HPA Disciplinary or Welfare Officer as appropriate, the second given to the person to whom the report refers and the third kept by the club. At the same time the club can take such action as they may deem necessary and the HPA Disciplinary or Welfare Officer may report the incident to higher authority if they consider the evidence justifies such action.
- c. It is mandatory for the umpires to fill in a Report Form for the following so that there is a record in case of repetition at another club:

- (i) If a player is sent off under Penalty 10a or b (Rule 40i),
- (ii) If a player is shown a yellow flag (Rule 41),
- (iii) For excessive misuse of the stick or dangerous riding (Rule 35 and Rule 36).
- (iv) If a pony is seen to be showing vice or not under proper control or is blind in one eye, has had any form of tracheotomy or has been desensitized (Rule 4g and h).
- (v) If a player's spurs or whip are not in accordance with the rules (Rule 3b and d).
- (vi) Team not trying (Rule 1n).
- (vii) If a pony tests positive to a drug test (See Regulation 8.3).

7. UMPIRES AND REFEREES (see also Annex B)

- a. **Authority.** See Rule 5c.
- b. **Referee.** The referee (or Third Man) has the overall responsibility to ensure that the game is controlled by the umpires according to the rules of the HPA. He will adjudicate, when asked, if the umpires disagree in which event his decision will be final. The referee should be in an elevated position on the centreline of the ground away from any distractions. He should concentrate on the play and not be drawn into conversation or use a mobile phone.
- c. **Consultation.** Ideally, the referee should be in contact with the umpires by radio so that he can inform them, during play, of any irregularity, particularly abusive or dangerous play off the ball. In any event, the referee should be able to contact the umpires at the end of each chukka and they should report to him at half time so that he can discuss with them the conduct of the game.
- d. **Umpires.** There will normally be two mounted umpires who have the duty to control the game according to the rules of the HPA. Should any incident occur which is not provided for in the rules then they have the authority to decide. Their decision will be final in all matters but should they disagree they should consult the referee.
- e. **Professional Umpires.** The Chief Umpire will appoint Professional Umpires to officiate at matches as laid down but he must inform the Tournament Committee of his choice. In the event of any disagreement, his decision is final.
- f. **One Umpire.** The Tournament Committee may stipulate in the tournament conditions that there will only be one Umpire or, if this has not been done and in order to get a match started, invite the two Captains to agree to only one. When there is only one umpire, there will normally be a referee but he too on occasion may be dispensed with.
- g. **Dress.** Umpires must wear a shirt or jacket with distinctive black and white vertical lines with clean white breeches or jeans and polished brown boots. They must wear a hard hat with a chin strap properly fastened and correctly positioned when mounted. The host club will normally provide an umpire shirt, whistle, pick up stick and ball bag (already on the umpire pony) for each umpire.
- h. **Conduct.** Any referee or umpire or any other official visiting a club of which they are not a member will be subject to the same rules of discipline and behaviour that govern the membership of that club. An umpire may not smoke or use a mobile phone during the course of a match and may only drink (non alcoholic) between chukkas nor may any official be under the influence of any illegal stimulant or drug, including any substance listed as such in Annex A to the Regulations (Human Doping).
- i. **International Matches.** Special rules may apply. See Annex C paragraph 4.

8. GOAL JUDGES (See also Annex B Paragraph 6)

- a. **Requirements.** A goal judge shall be appointed for each goal. On occasion, two may be used at each goal. Each shall give testimony to the umpire at the latter's request as to the goals scored or other points of the game near the goal, but the umpire shall make the final decisions.

- b. **Goal Scored.** When a goal is scored (see Rule 20), the goal judge should wave his flag vigorously above his head to signify that a goal has been scored.
- c. **Ball Crosses Back Line.** When the ball crosses the back line wide of the goal, the goal judge should signal by holding up a ball above his head, and if the umpire has not blown the whistle to award a Penalty 6, he should then quickly place a ball on level ground one foot within the playing area where it crossed the line except that it must be more than 4 yards from the goal posts or sideboards.
- d. **Instructions.** Goal judges must be properly briefed, in particular :
 - (i) To wear distinctive clothing such as white coats and protective riding or cricket hard hats, but not cycle helmets.
 - (ii) To remain behind a white line, which must be drawn 20 yards behind each goal, until the ball is out and the ponies have slowed down.
 - (iii) To keep all impedimenta, e.g. chairs, ball boxes, spare goal posts, at least 30 yards behind goal posts. Other items such as bicycles should be placed well away from the ground so that they are not a danger to players or loose horses.
- e. **Back to Back Goals.** Goal judges should not be used when there is play on two grounds with back to back goals.

9. **TIMEKEEPER/SCORER (See also Annex B Paragraph 5)**

A Timekeeper/Scorer (referred to hereafter as “the Timekeeper”) shall be employed in all matches with an Assistant Scorer who shall man the scoreboard. The Timekeeper shall be conversant with Rules 14 - 31 which govern his responsibility. During the match he should fill out a scorecard and when completed hand it in to the Polo Manager as the true record of the score.

10. **MEDICAL COVER**

Clubs must ensure that there will be present for matches at a minimum 2 persons with First Aid qualifications and for all other polo at least one such person. The presence of a paramedic is recommended and clubs should inform their local ambulance service in advance that the match is taking place and ensure that the correct telephone number is readily available. A First Aid qualification means having attended and completed a British Red Cross “Basic First Aid Course (Module 7)” or a St. John Ambulance “Emergency Aid for Appointed Persons Course” or an equivalent qualification, and completed such post-training refresher courses as are required to maintain a current attendance certificate. Should the umpire require medical assistance for an injured player, he should signal by waving his stick above his head.

GROUND, BALL AND ACCESS DURING PLAY

11. **THE GROUND AND FIELD OF PLAY (See Annex A)**

- a. **Ground.** The ground is taken to be the enclosed area which includes the field(s) of play, the clubhouse or similar facility, the pony lines, horsebox park and any practice areas.
- b. **Field of Play.** The field of play is taken to be the prepared surface of the playing area and safety zone. The field of play should be marked as in Annex A.
- c. **Playing Area.** The full size playing area shall be 300 yards (275 metres) in length (goal posts to goal posts) by 200 yards (183 metres) in width if unboarded; and by 160 yards (145metres) if boarded. The minimum length shall be 250 yards (230 metres).
- d. **Safety Zone.** The Safety Zone is recommended to extend at least 10 yards beyond the sidelines/boards and at least 30 yards beyond the back line. Clubs should ensure that the safety zone is of sufficient length, width and texture so that a player going at speed can stop with safety. Any incident of the game which occurs in the safety zone shall be treated as though it occurred on the playing area.

- e. **Goal Posts.** The goal posts shall be 8 yards (7.3 metres) apart (inside measurement) and able to be widened to 16 yards (14.6 metres) to decide a tie (Rule 17) and centered at each end of the field. The goal posts shall be at least 10 feet (3 metres) high, and light enough to give way if collided with. Should a goal post be knocked down then the umpires should allow play to continue until it is neutral (see Rule 15b(i)).
- f. **Boards.** The boards shall not exceed 11 inches (28 centimetres) in height. They may be curved at the ends.
- g. **Private Grounds**
 - (i) **Inspection.** All private grounds must have been inspected by an official of the HPA and passed before they may be used for matches played in HPA tournaments.
 - (ii) **Matches.** A Tournament Committee that, in agreement with the owner, schedules a match to be played on a private ground, must contact the Polo Manager of the Club designated as the overseeing club for that ground. The Polo Manager should inform the Tournament Committee of the matches and teams that have been played at that ground in previous tournaments. If in agreement then the designated club must have an official at the ground who shall be responsible for all matters concerning the match.
- h. **Ground Unsafe to Play.** If it is the opinion of the Tournament Committee or the umpires that a ground is unsafe to play see Rules 5d and 15c.

12. THE BALL

The size of the ball shall be 3 to 3.5 inches (76 to 89 millimetres) in diameter; the weight of the ball shall be within the limits of 4.25 to 4.75 ounces (120 to 135 grams).

13. ACCESS DURING PLAY

- a. **Playing Area.** No person is allowed on the playing area during play for any purpose whatsoever, except the players and umpires. If play has been halted, no person may come onto the playing area to assist except as authorized by the umpires.
- b. **Safety Zone.** During play, the safety zone is restricted to the players, umpires and goal judges except that:
 - (i) A stick holder may enter the safety zone but not the playing area to hand over a stick to a player.
 - (ii) A pony may be ridden back to the pony lines providing it is safe to do so.
 - (iii) Ponies may be stationed and changed at the side (but not in the safety zone) providing there are no spectators in the area or at the ends of the ground in the corners of the safety zone. The area in which ponies are to be changed must be fair to both sides and be agreed between the umpires and the Polo Manager or Tournament Committee. The umpires must help to police it.

START, DURATION AND END OF PLAY

14. START OF PLAY

- a. **Five Minute Bell.** The timekeeper will sound the bell (or hooter) five minutes before the advertised time for the start of the match to alert the teams and officials.
- b. **Line-up and Throw-in.** At the start of the match the two teams shall line up in the middle of the ground, each team being on its own side of the half-way line. After calling for ends, the umpires should ask the team captains if they agree with the score posted on the scoreboard (see Rule 1k for handicap calculation). It is the captains' responsibility to check the handicap of members of their team. The ball is then thrown in in accordance with Rule 21.
- c. **No Redress.** After the ball has been thrown in there can be no redress as to the score posted at the start of play even if the umpires have failed to ask team captains if they agreed.

15. DURATION OF PLAY

- a. **Match.** A match may be played over 4, 5 or 6 chukkas as stated in the Tournament Conditions. Chukkas shall last at most 7 1/2 minutes playing time.
- b. **State of Play.** At any time there are three states of play:
 - (i) **Ball in Play.** Play will be continuous except for specified intervals or when an umpire blows his whistle for whatever reason. During this time, on occasion, play is deemed to be neutral when neither side has the advantage. It will not be stopped to allow a player to change a pony unless it is injured. (See Rule 30).
 - (ii) **Ball Out of Play - Clock not Stopped.** The ball is out of play when it is hit over the sidelines or boards, the backline by an attacker, or if a goal has been scored. The clock is not stopped.
 - (iii) **Break in Play - Ball Dead - Clock Stopped.** A break in play with the ball dead occurs when an umpire blows his whistle, or at the first sound of the second bell, or the first in the last chukka (unless the match is tied and a result is required). The clock is stopped immediately. The ball remains dead until the umpire calls "play" and it is hit, hit at or thrown in.
- c. **Unfinished Match.** Once a match has started it shall be played to a finish unless stopped by the umpires for some unavoidable cause, such as darkness or the weather, in which case it shall be resumed at the point at which it has stopped (score, chukka and position of the ball) at the earliest convenient time, to be decided upon by the Tournament Committee (see also Rule 5d and Annex D, Rules for League Matches, Paragraph 7).
- d. **Chukka.** Chukkas are normally 7 1/2 minutes playing time with the exception of the last which will end on the bell after 7 minutes unless teams are tied and the Tournament Conditions require a result (see also Rules 16 and 17).
- e. **Intervals.** In all matches there shall be a half-time interval of 5 minutes. For 5 chukka matches, this should be taken after the third chukka. All other intervals shall be of 3 minutes except 5 minutes shall be allowed if extra time is to be played or goals widened. A longer interval may be taken after any chukka in order to allow a cut up ground to be trodden in. A bell or hooter should be rung at the end of these intervals as a signal to the teams that the umpires are about to restart play.
- f. **Unnecessary Delay.** No player or team may cause unnecessary delay before or during play. (See also Rules 18a, 24 e, f, and 39d.)

16. END OF TIME

- a. **End of Normal Chukka.** In a normal chukka, ie not the last, the first bell will be sounded as a warning after 7 minutes of play. If the ball is 'out of play' when the bell is sounded then the umpire will blow his whistle and call 'chukka' to end the chukka. If the ball is 'in play' however, play will continue until the umpire blows his whistle, it goes 'out of play' or hits the boards or at the first sound of the second bell to signify that a further 30 seconds has elapsed. Any penalty awarded after the first bell will be taken at the start of the next chukka.
- b. **End of Last Chukka.** The last chukka will end on the sound of the first bell unless the Tournament Conditions require a result and the teams are tied. In this event play will continue until either a goal has been scored or awarded or on the first sound of the second bell. In the latter event extra time will be played. (See Rule 17.)
- c. **Penalty at End of Last Chukka (Five Second Rule).** If a penalty has been awarded within the last 5 seconds of the last chukka, the Timekeeper must allow a further 5 seconds of play from the time the ball is hit or hit at. e.g. if there were 3 seconds left, the time keeper will allow 5 seconds from the time that the penalty is taken; thus 2 seconds will have been added to the game. The bell will be rung if a goal is scored or when 5 seconds have elapsed unless another

penalty is awarded in which case the process is repeated. If the whistle is blown and no penalty is awarded, then play shall continue for the time remaining before the whistle was blown.

- d. **Foul on The Bell.** If the bell rings for the end of the chukka or match just after a foul has been committed but before the umpire has had time to blow his whistle and the foul is confirmed, the penalty will be taken as above.

17. EXTRA TIME TO BE PLAYED

- a. **Interval.** There will be an interval of five minutes.
- b. **Sudden Death.** The team that scores or is awarded the first goal wins the match.
- c. **First Chukka.** The first chukka of extra time may be started with either:
 - (i) Normal goals at the spot from where the previous chukka ended; ends are not changed; or
 - (ii) Widened goals if the Tournament Conditions so state or team Captains agree in order to save ponies and time. The first chukka with widened goals will be started with a throw in from the centre, ends having been changed (but see Rule 18c). Teams change ends for any subsequent chukka of extra time.
- d. **Second Chukka.** Goals will be widened for the second chukka of extra time.

CHANGING ENDS, WRONG LINE UP, SCORING GOALS AND WINNING

18. CHANGING ENDS

- a. **After Goal Scored.** Except in the case of a Penalty One, ends shall be changed after every goal is scored. One umpire should canter as if from the back line. When he reaches the centre the ball shall be thrown in to restart play. Should a team cause unnecessary delay, the whistle should be blown and a Penalty 5b should be awarded against them.
- b. **No Score at Half-Time.** Ends shall also be changed if a goal has not been scored by half-time, and play shall be re-started by a throw in, hit in or penalty hit as appropriate at a corresponding position in the other half of the ground
- c. **Score Level: Widened Goals.** If the score is levelled at the very end of a match and the bell is rung before the ball has been thrown in, and the next chukka is due to begin with widened goals (Rule 17), then ends shall be changed once only.
- d. **Wrong Line Up.** See paragraph 19a.

19. WRONG LINE UP AND OFFSIDE

- a. **Wrong Line Up By Teams.** If the umpires inadvertently allow the teams to line up the wrong way at any time play will continue. However, if at the end of the chukka no goal has been scored proceed as in Rule 18b.
- b. **Offside Player.** A player is offside if he enters play on the side of the opposing team at a throw in, hit in or penalty, ie behind the ball (see Rule 39f). He may not make a play until he is behind a player of his own team. Should he do so a Penalty 5a or upgrade will be awarded against his own team.

20. SCORING GOALS AND WINNING

- a. **To Score.** A goal is scored from play when the ball passes between the goal posts or the imaginary vertical lines produced by the inner surfaces of the goal posts and across and clear of the goal line. A ball on the line is still in play. A ball hit directly over the top of either goal post shall not count as a goal because it does not pass between their inner vertical lines. If a ball lodges in the goal post, a hit in will be awarded. If a ball splits, see Rule 31. Should a goal post fall in such a way as to stop a goal which in the judgement of the umpires would have been scored then it should be awarded. A similar ruling will apply if the ball hits a flag at the top of a goalpost.

- b. **Disputed Goals or Score.**
 - (i) If the two umpires are unable to decide as to whether a goal was scored or not, having first consulted the goal judge, and if still in doubt the referee, they must give the benefit of the doubt to the defending team.
 - (ii) If during a break in play e.g. after a goal has been scored, one or other team captain notices that the score has been incorrectly recorded on the scoreboard, he may bring this to the attention of the umpires. The umpires should immediately check with the scorer to ensure that the correct score is recorded.
 - (iii) An objection may not be made as to the score after a match is over and in no event will the score be altered.
- c. **Whistle Blown as Goal Scored.** If an umpire blows his whistle for a foul at the same time as a goal is scored then:
 - (i) If it is agreed that the attacking team have committed the foul, the goal will be disallowed and a penalty awarded to the defending team. If the umpires disagree and the referee rules "No Foul" then the goal will stand. If, however the referee was unsighted and therefore unable to make an informed judgement he should instruct a throw in to be taken at the spot where the 'foul' occurred.
 - (ii) If the whistle has been blown for a foul against the defending team then the goal will stand even if the referee rules 'No foul'. If it is agreed that the defending team have committed a foul, the umpires have the option of a Penalty One or restart from the centre with a Penalty 5b; or throw in as normal depending on the severity of the foul.
 - (iii) Should the goal stand then the umpires will instruct the goal judge to wave his flag. The clock will be restarted at this point, unless the umpire blows his whistle for a second time to signify that a penalty has been awarded.
- d. **To Win.** The side that scores the most goals, including goals awarded on handicap and by penalties, wins the match.

RESTARTING PLAY

21. THROW IN

- a. **When Thrown In.** The ball will be thrown in by the umpire in the following circumstance:
 - (i) At the start of the match (Rule 14b) or on restarting after an interval (Rule 23) if a penalty has not been awarded.
 - (ii) After a goal has been scored (Rule 18a) or Penalty 1 awarded (Rule 40a).
 - (iii) If the ball has gone out of play over the side lines or boards (Rule 22).
 - (iv) After an accident or injury or any forced stoppage (Rules 26 – 31).
 - (v) If the umpires award Penalty 7 for breach of the rules governing No Contact (21c, 24b, 39j) and Delay 39d.
 - (vi) If the whistle has been blown for a foul and the umpires or the referee rule 'No Foul' (Rule 27b).
 - (vii) If the ball has been carried unintentionally (Rule 36c), trodden in or split (Rule 31).
- b. **Where Thrown In.**
 - (i) Ball hit over sideline or boards. See Rule 22.
 - (ii) On all other occasions the umpire will stand at the spot as laid down in the specific rule or where the incident took place but at least 20 yards from the sidelines or boards and 10 yards from the goal or back line. The ball to be thrown in towards the nearest sidelines or boards.
- c. **Position of Teams.** Both teams shall line up at least 5 yards from the umpire parallel to the back line with at least two feet separating each team. There shall be no contact between players on opposing sides before the ball is thrown in. For players offside see Rule 19b.

- d. **Play Restarted.** The umpire, having been satisfied that the teams are apart and ordered, will bowl the ball in underhand, low and hard between the opposing ranks of players; the players to remain stationary until the ball has left his hand. If players are infringing the gap the umpire should blow the whistle to stop the clock and insist on a gap before throwing in the ball. Umpires should penalise a team if the infringement is repeated or considered to be intentional in order to stop the clock.

22. BALL HIT OVER SIDE LINE OR BOARDS

The ball must go over and clear of the sidelines or boards to be out. When the ball is hit over the side line or boards, the umpire will throw in the ball in accordance with Rule 21 with his pony 5 yards in from the boards or sideline where it went out but at least ten yards from the backline. A reasonable time must be allowed for players to line up.

23. RESTARTING AFTER INTERVAL

On play being resumed after an interval, the ball shall be thrown in or a penalty or hit in taken as if there had been no interval. If the ball had hit the boards before the interval it shall be treated as if it were out. The umpire must not wait for players who are late.

24. ATTACKER HITS BEHIND - HIT IN

- a. **Attacker Hits Behind.** The ball must go over and be clear of the back line to be out.
- b. **Hit In.** When the ball is hit behind the back line by the attacking side, the goal judge will place the ball in accordance with Rule 8c. The umpire shall give the team facing the hit reasonable time to get into position before calling 'Play'. None of these players shall be forward of the 30 yard line until the ball is hit or hit at; the team taking the hit may place themselves where they choose. There will be no contact between players from the moment the ball crosses the back line until it is brought back into play. The striker may not tee up the ball but may reposition it once. Once the umpire has called "Play", the striker may not circle and must hit in immediately. The ball is in play the moment that it has been hit or hit at and missed (see also Rule 32a). Should a member of the team facing the hit cross the 30 yard line before the ball is struck the hit in should be moved forward to the 30 yard line.
- c. **Foul.** If the whistle is blown for a foul at approximately the same time as the ball is hit behind the back line by an attacker and the foul is over-ruled, the ball shall be hit in.
- d. **Hitting Before 'Play' is Called.** If the player hitting in, hits or hits at the ball before "Play" is called the umpire shall blow his whistle and allow the hit to be taken again. He shall award a Penalty 6 for persistent breach of this rule.
- e. **Delay by Side Hitting In.** In the event of unnecessary delay by the side hitting in, the umpire shall call for the ball to be hit in at once. If the umpire's request is not complied with, he shall award a Penalty 6.
- f. **Delay by Side Facing Hit In.** In the event of unnecessary delay by the side facing the hit in, the hit in shall be moved up to the 30 yard line, none of the side facing the hit in to be forward of the 60 yard line.

25. DEFENDER HITS BEHIND - PENALTY 6 (SAFETY 60)

- a. **Defender Hits Behind.** If one of the defending side hits the ball over his back line either directly or off his own pony, or after glancing off the boards or goal posts, Penalty 6 shall be awarded. However, if the ball strikes any other player or pony, or the umpire, before going behind, it shall be a hit in.
- b. **Foul.** If the whistle is blown for a foul at approximately the same time as the ball is hit behind the back line by a defender as above and the foul is over-ruled, a Penalty 6 shall be awarded.

PLAY NOT STOPPED/ STOPPED

26. PLAY NOT STOPPED

Play will not be stopped in the following circumstances:

- a. **Advantage Rule.** The umpires may choose to allow play to continue if a player is fouled but it would disadvantage him or his team were play stopped. However, if during the subsequent phase of play the player fouled is unable to maintain the advantage then play should be stopped and the penalty awarded. (See Annex B paragraph 3h(v)). The advantage rule should not be invoked for a dangerous foul. To signal that he has seen the foul but is playing the advantage, the umpire should say 'Play On' and raise his hand.
- b. **Lost or Broken Tack.** Time out will not be given for lost or broken tack such as a martingale, stirrup leather or iron, lost bandages or boots if, in the umpires opinion, there is no danger to the players or ponies. For Dangerous Tack see Rule 30b.
- c. **Ball Hits Umpires Pony.** If the ball hits the umpires pony or any other impediment on the ground, play will continue with a new line being established as if it had hit a playing pony.

27. PLAY STOPPED FOR A FOUL

- a. **Foul.** A foul is defined as any infringement of the Rules. Should a foul be committed, the umpires will blow the whistle to stop play except when he considers that the side fouled would be clearly disadvantaged (see Rule 26a).
- b. **No Foul.** If the referee rules 'No Foul' or the umpires themselves agree after consultation that a foul was not committed, then a throw-in towards the nearest boards or sideline will be taken from the spot where the ball was when the whistle was blown. If the referee is unable to make an informed judgement on the play, then he should rule 'No Foul'.

28. PLAY STOPPED FOR PLAYERS EQUIPMENT

- a. **Illegal Equipment.** If any player infringes Rule 3 (Players' Equipment), the player shall be sent off the ground by the umpires and may not re-enter play until the offence has been rectified. Play shall be started or restarted as soon as the player has left the ground.
- b. **Loss of Headgear.** If a player loses his headgear the umpire shall stop the game when play is neutral to enable him to recover it.

29. PLAY STOPPED FOR DISMOUNTED OR INJURED PLAYER

- a. **Player Dismounted.** If a player dismounts from his pony voluntarily or by accident, the umpires shall not stop the game until play is neutral (see Rule 15b(i)), unless he is of the opinion that the player is injured or is liable to be injured, in which case he should stop play immediately. The umpire shall re-start the game with a throw in directly after the player concerned is ready to resume play and shall not wait for any other player. A dismounted player may not hit the ball nor interfere with the play and should make every effort to retain hold of his pony.
- b. **Player Injured.**
 - (i) If a player is injured, the umpires shall stop the game immediately and signal for medical assistance by waving the pick-up stick above their head. A period not exceeding 15 minutes shall be allowed for the recovery of the injured player. If it is likely that the player will not be able to continue, then a qualified substitute should be alerted during this period (see also Rule 2 and Annex B, Paragraph 3n). If he is unfit to continue, the game shall be restarted as soon as possible with a substitute.
 - (ii) If a player be disabled by a foul, and a qualified player cannot be found to substitute (see Rule 2), the umpires, in consultation with the referee, may decide to remove a player from the team that has fouled. The player removed shall be the one whose handicap is

equal or failing that nearest above to the disabled player. If the disabled player is higher than that of any of his opponents, the captain of the team fouled will designate the one to retire. The game shall continue and no change in handicap shall be made; if the team that has fouled refuses to continue, it shall forfeit the game.

(iii) If an umpire stops play on the request of a player claiming injury or sickness then the same conditions will apply as in Rule 30c below.

- c. **Concussion.** In the event of a player being or seeming to be concussed the umpires, or if no umpires are present the senior player on the ground, will stop the game and arrange for the player to see a doctor as soon as possible. If no doctor/paramedic is present when the accident occurs it will be the sole responsibility of the umpires or the senior player present to decide if the player was concussed and if so the player cannot continue. The HPA must be notified within 24 hours by fax or email and the player will not be permitted to play again for a minimum of one week from the date of the concussion without a certificate of fitness from a doctor.

30. PLAY STOPPED FOR INJURY TO PONY OR DANGEROUS TACK

- a. **Welfare.** The umpires have a responsibility during play for the welfare of ponies. Should a pony be in distress or lame it must be led off the ground as quietly as possible.

(i) **Conditions.** If a pony is suffering from any of the conditions outlined in Rule 4g, in particular lameness, distress, showing blood or lack of control or vice, then the umpires must stop the game immediately and the player must dismount and lead the pony to the nearest side or back line to change.

(ii) **Pony Falls.** If a pony falls, (a pony is judged to have fallen if its shoulder touches the ground) umpires should stop play immediately and ensure that it is trotted up and that it is sound before the player remounts.

(iii) **Serious Injury.** If a pony is seriously injured then it must be taken off the ground in a horse ambulance. (See also Rule 4o and Paragraph 7 of Annex B to the Regulations and Paragraph 3n of Annex B to the Rules.)

(iv) **Lost Shoe.** If a pony throws or skews a shoe, the player may point this out to the umpires, who will allow the player to change his pony during the next break in play.

(v) **Restart of Play.** In the above cases the umpires shall restart the game directly the player concerned has returned and is ready to play and shall not wait for any other player.

- b. **Dangerous Tack.** The game will be stopped immediately in the interest of safety for tack which presents a danger to any player or pony such as a broken girth or broken martingale if the end trails on the ground, broken rein if single, broken or loose bit, broken curb chain or loose bandages or boots. The umpire may allow the player to rectify the fault immediately on the ground if it can be done quickly, otherwise the player must leave the field of play and play will be restarted as soon as the player has done so, unless the tack has been broken by contact with another pony in which case the start of play will be delayed until his return.

- c. **Request Stop.** During a break in play, or in exceptional circumstances when the clock is not stopped, a player may call to an umpire that his pony is injured, lame or distressed and may need to be changed. The umpires will respond to his call by blowing the whistle if play is not already stopped and proceed as below.

(i) If they are satisfied that the pony needs to be changed, they will call 'Free Change' and all other players may change. Play will be restarted as soon as the player with the pony concerned has returned on a fresh pony and is ready to play.

(ii) If they are not satisfied that the pony needs to be changed then that player and any player on the opposing team only may change but not the remaining players of his team. Play will be restarted as soon as the player with the pony concerned has left the field of play.

- (iii) Any unnecessary delay to the restart of the game caused by the player of the pony that needed to be changed will be penalised.
- (iv) If the game has been stopped at the request of a player so that a pony can be changed, then the umpires may demand that the pony concerned be tagged or marked under their supervision so that it may not play again.

31. PLAY STOPPED FOR TRODDEN IN OR SPLIT BALL

- a. **Trodden In.** If the ball is trodden into the ground, the umpires shall stop play, remove the ball and re-start with a throw in (Rule 21).
- b. **Split.** If the ball splits, the umpire should stop play:
 - (i) Immediately if in equal parts.
 - (ii) When play is neutral (See Rule 15b(i)), if the larger part can still be played. Play will be restarted with a throw in if the ball was in play and another hit if not. A goal will be awarded if the larger part of the ball went through the goal.

LINE OF THE BALL, RIGHT OF WAY AND PRECEDENCE

(See Annex F for Examples to the Rules - Figs i to xvii)

32. LINE OF THE BALL AND RIGHT OF WAY

- a. **Line of the Ball (LOB).**
 - (i) The LOB is taken as the extended path along which the ball has travelled or is travelling.
 - (ii) If a player misses an out of play or dead ball, the LOB is taken as that which the player was riding.
- b. **Right of Way (ROW).** At any stage when the ball is in play, there shall exist as between any two or more players a precedence which is referred to as the ROW which:
 - (i) Shall be considered to extend ahead of any player who has established himself on it, and in the direction in which such player is riding.
 - (ii) Entitles a player to proceed down it freely and without danger to hit the ball on his offside unless he is subjected to a legitimate ride off or stick hooking, or is meeting two players on the exact LOB as in Rule 33c. If he places himself to take it on the near-side and thereby in any way endangers another player who would otherwise have been able to make or attempt to make a legitimate play, he must keep clear of this other player so that this other player can make or attempt to make that legitimate play.
 - (iii) Is taken to be approximately 5 feet wide measured from the ball to player's near side leg.
- c. **LOB and ROW.**
 - (i) The LOB is the reference from which a player must judge if he is or is not entitled to the ROW. The ROW may or may not be identical to the LOB and will depend on the particular situation covered in the rules below.
 - (ii) The ROW will depend on direction, angle to the LOB and speed and distance relative to other players. The ROW will usually belong to the player travelling in the same direction as the ball who has established himself quickest on or at the closest angle to the LOB. It will not necessarily belong to the player who last hit the ball.

33. ROW OR PRECEDENCE BETWEEN PLAYERS

Crossing Blocking and Meeting

- a. **Crossing.** No player may cross or turn left or right across the ROW of an opposing player who is committed on the ROW except at such a speed or distance that no risk of a collision or danger to either player is involved. A player crossing behind a player on the ROW will foul if he crosses another player following on the ROW.

- b. **Blocking.** No player may block the progress of an opponent established on the ROW.
- c. **Meeting.** When two players are riding from opposite directions to hit the ball, they must play the ball on their offside

Players on the Exact LOB

- d. Two opposing players riding on the exact LOB and simultaneously making a play on each other, whether they are following or meeting the ball, have the ROW over a single player coming from any direction (Fig i).
- e. A player on the exact LOB, either following (Fig ii) or meeting the ball (Fig iii) on his offside, has a ROW over all other players except as in 33c above.
- f. Two players riding in opposite directions on the exact LOB have an equal ROW provided that both take the ball on their offside (Fig iv).

Players at an Angle to the LOB

- g. When two or more players ride in the same direction, the player who has the ROW is the one who is at the least angle to the LOB (Fig v) provided that he does not contravene rule 32b (ii) if he plays the ball on his nearside (Fig vi). If the players are at equal angles, the player that has the LOB on his off side has the ROW (Figs vii and viii). Any player or players riding in the same direction that the ball is travelling or has travelled has a ROW over any player or players approaching from the opposite direction (Fig ix, x and xi) unless the latter are on the exact line as in 33c and 33d.

Losing the ROW

- h. A player in possession of the ball may check to avoid what would have been a legitimate ride off but if an opponent is then able to enter the ROW safely with the ball ahead of him, the player following cannot ride into that player from behind and only has a play on his nearside (Figs xii and xiii.)
- i. If a player hits the ball past the offside stirrup of an opponent who is on the LOB and travelling at the same speed, the opponent has the right to play the ball on his offside. The player who hit the ball, or a player following, cannot ride into the opponent from behind and only has a nearside play (Fig xiv).
- j. The player with the ROW is entitled to play the ball on his offside. If a player switches to play the ball on his nearside he loses the ROW and has fouled if he endangers another player or causes another player to check or pull away (Fig xv).
- k. A player may lose the ROW if, having hit the ball, he deviates from the exact LOB (Fig xvi).

Change of ROW

- l. If the player in possession changes the line suddenly towards an opposing player, that player must clear the new ROW immediately without making a play on the ball. In this case, it is not a 'play' if a pony kicks the ball.
- m. If the LOB and hence the ROW changes unexpectedly, the players on the original ROW have a right to continue for a short distance but they may not make a play if another player is established on the new line.
- n. The ROW is deemed not to change if the ball deviates unexpectedly for a short distance only and the player with the original ROW can still play the ball on his offside without changing direction.

Stopping or Slowing down on the Ball - One Tap Rule

- o. The player with the ball who chooses to stop or slow down to walking speed **once he has been** challenged but is neither being blocked nor ridden off may then tap the ball only once in any direction, after which he must immediately leave it, accelerate with it or hit it away (Fig xvii). Should he leave it for another member of his team to take, that player, whether challenged or not, must immediately run with it or hit it away without the option of a tap. The opponent is considered to be challenging if he is within two horses' length on either the

offside or the nearside of the player with the ball. A Penalty 5a will be awarded for breach of this rule (subject to Rule 40e if a defender is in breach within his own 60 yard line). An upgrade may be given for consistent abuse. A player who chooses to tap the ball under the pony of a challenging player will foul if he rides into the challenging player other than by a legitimate ride off.

34. SPARE

RIDING OFF, DANGEROUS RIDING, INTIMIDATION, HOOKING, MISUSE OF WHIP, SPURS AND STICK, ROUGH OR ABUSIVE PLAY

(See Annex F for Examples to the Rules - Figs xviii to xxv)

35. RIDING OFF, DANGEROUS RIDING AND INTIMIDATION

A player may not ride in a manner which creates danger to another pony, player, official or any other person or which places the welfare of his own pony at undue risk. A player must ride off shoulder to shoulder (saddle to saddle) and may push with his arm above the elbow provided the elbow is kept close to the side. In particular, a player may not :

- a. Ride off at such an angle or speed as to endanger a player or his pony.
- b. Ride into an opponent in front or behind the saddle. (Fig xviii)
- c. Ride an opponent across or into the ROW of another player at an unsafe distance (Fig xix).
- d. Ride off an opponent who is already being ridden off by another member of his team (sandwiching) (Fig xx).
- e. Ride off an opponent when the ball is out of play or dead. If there is contact between players before the ball is hit or hit at for a hit in or penalty, the umpires should blow the whistle (to stop the clock if it is not already stopped) before the ball is hit or hit at and warn the players or player concerned. Umpires should penalise a team if the infringement is repeated or considered to be intentional in order to stop the clock.
- f. Continue to ride off another player over the goal line thereby endangering the goal judge.
- g. Ride his pony from behind into the forehand or backhand stroke of an opponent (Fig xxi).
- h. Use his pony to spoil a stroke by riding over the ball and into an opponent who has already started the downward swing of a full forehand or backhand stroke (Fig xxii). Note: This does not prevent a player from riding over the ball on a legitimate ride off when an opponent is tapping the ball or has not started the downward swing of a full forehand or backhand stroke.
- i. Zigzag in front of another player in such a way as to cause the latter either to have to check his pace or risk a fall.
- j. Pull across or over a pony's legs either in front or behind in such a manner as to risk tripping either pony.
- k. Ride at an opponent in such a manner as to intimidate, causing him to pull out or miss his stroke, although no foul actually occurs.

36. HOOKING, MISUSE OF THE STICK AND CARRYING THE BALL

- a. **Hooking.** For a player to make a legitimate hook, the following conditions must apply:
 - (i) His pony must be on the same side of his opponent's pony as the ball (Fig xxiii), or in a direct line behind (Fig xxiv and xxv), and his stick must be neither over or under the body nor across the legs of an opponent's pony.
 - (ii) All of his opponent's stick must be below the level of his opponent's shoulder.
 - (iii) His opponent must be in the act of striking the ball.
 - (iv) A player may hook legitimately the stick of an opponent at the same time as the opponent is being ridden off by a team mate.

- b. **Misuse.** A player may not hold his stick in such a way as to interfere with another player or his pony or use his stick in a manner that creates danger to another pony or player such as:
 - (i) Reaching over and across or under and across any part of an opponent's pony to strike at the ball.
 - (ii) Hitting into or amongst the legs of a pony.
 - (iii) A player who is holding the ball through dribbling should be penalised if he is judged to have created the danger by then playing a full shot.
 - (iv) Taking a full swing at the ball from the throw in or in a melee.
 - (v) Taking a full swing under a pony's neck particularly when being ridden off.
 - (vi) "Windmilling" or "helicoptering" his stick either as an appeal or in celebration of scoring a goal or to summon his groom.
 - (vii) Dropping the head of the stick onto the pony's rump.
- c. **Carrying the Ball.** A player may not catch, kick, direct or hit the ball with anything but his stick. He may block with any part of his body but not with an open hand. He may not carry the ball intentionally. If the ball becomes lodged against a player, his pony or its equipment, in such a way that it cannot be dropped immediately, the umpire shall blow his whistle and restart the game with a throw in (Rule 21) at the point where it was first carried.

37. ROUGH OR ABUSIVE BEHAVIOUR

A player may not:

- a. Use his whip other than in exceptional circumstances when the ball is out of play or dead. For this offence the umpires should award as a minimum a Penalty 5 (b).
- b. Use his whip or spurs unnecessarily or in excess at any time (See Annex B paragraph 3k.).
- c. Intentionally strike his own pony with his stick at any time.
- d. Intentionally strike another player or another player's pony with his stick, whip or fist.
- e. Abuse his pony by hauling or jabbing it unnecessarily in the mouth.
- f. Use foul or offensive language or a gesture of abuse in such a way as to bring the game of polo into disrepute.
- g. Seize with the hand, strike or push with the head, hand, arm, or elbow another player (see also Rule 35).
- h. Knowingly strike the ball when it is off the field of play or after the whistle has been blown. If a hit is made after the whistle for a foul, the umpires should increase the severity of the penalty if the hit is by a member of the fouling team, or cancel the penalty or decrease its severity if the hit is by a member of the team fouled.
- i. Intentionally strike a ball during play in such a way that it may cause injury to a spectator or official, or damage to property.

PENALTIES

38. PERSONAL FOULS AND TECHNICAL PENALTIES

A personal foul involving unsportsmanlike conduct such as, but not limited to:

- (i) Disrespect towards officials,
- (ii) Arguing with the umpire or other official,
- (iii) Foul or abusive language,
- (iv) Appealing for fouls verbally or with the stick,

must be penalised by a penalty known in this case as a technical penalty. If a penalty has already been awarded then an upgrade to a more serious penalty should be made except when the initial penalty was a Penalty 2 in which case the umpire will raise an arm and allow the penalty to be taken as normal; if successful, play will be started with a Penalty 5b, teams having changed ends;

if unsuccessful then it will be taken again and play will continue as normal. If no penalty had been awarded then the decision as to the award will rest with the umpires. A Penalty 1 will not be given as a technical. Note that a Penalty 10a or b can be awarded in addition to any of the above penalties.

39. PENALTIES - GENERAL

Where the selection of the penalty to be awarded is at the discretion of the umpire, they should take into account the degree of danger, where the foul took place, the direction of play, the position of the players and the frequency of similar fouls. If the umpires cannot decide they should consult the referee. The umpires may move a penalty back from where a foul occurred, for example if a defender fouled within his own 30 yard line near the boards and the goal is not directly threatened the umpires may award a Penalty 3 or 4 as appropriate.

- a. **Ball In Play.** The ball is in play the moment it has been hit or hit at if missed. Should the striker hit the ball before 'Play' has been called, the hit shall be taken again.
- b. **Positioning of the Ball.** Making a tee is not allowed: one player only may position the ball, and must take no longer than fifteen seconds after which time the umpire shall call play. However, for a Penalty 5a and b the umpire will place the ball on the spot from where the penalty is to be taken ensuring a good lie and then immediately call 'Play'. The striker or any member of his team may not reposition the ball after 'Play' has been called.
- c. **No Circling.** Once the umpire has called 'Play', the striker must immediately start to take the hit. The ball must be hit or hit at on the first approach without any circling at the beginning of or during the run up.
- d. **No Delay.** No player may cause unnecessary delay; this can include an excessively long run up. Note: For abuse of Rules 39 b, c, and d in the first instance a Penalty 7 will be given with a more severe penalty thereafter.
- e. **Penalties 3, 4 and 6.** The striker must have the intent to carry out Penalties 3, 4 and 6 in only one hit and may not make a preliminary hit for himself or a team mate. If he mishits, misdirects or misses the ball he or any member of his team may only hit or hit at the ball with a half shot, that is with the head of the stick starting the downward swing below the shoulder of the striker, until the ball has been hit or hit at by an opponent. However, the stick may be raised above the shoulder of any player to stop or deflect the ball providing that the head of the stick does not move a significant distance as contact is made with the ball. Any action which the umpires consider dangerous will be penalised. A Penalty 5a from where the penalty was taken shall be awarded to the opposing team for any infringement by any member of the team taking the penalty.
- f. **Behind The Ball.** To be 'behind the ball' a player must be behind a line that runs through the spot where the ball has been placed parallel to the back line.
- g. **Wrong Line Up by Defender.** If a defender lines up behind the ball or is closer than 30 yards to the ball when the ball is hit or hit at, then the penalty will be upgraded.
- h. **Wrong Line Up by Attacker.** If a member of the team taking the penalty lines up incorrectly then a Penalty 5a will be given from where the attacker was standing.
- i. **At End of Chukka.** Special rules apply for penalties awarded after the first bell of a chukka. See Rule 16a and c.
- j. **No Contact.** There will be no contact between players of opposing sides until the ball is hit, hit at or thrown in.

40. PENALTIES - SPECIFIC

a. Penalty 1 - Penalty Goal

If, in the opinion of the umpires, a player commits a dangerous or deliberate foul in the vicinity of goal in order to save a goal, the team fouled shall be awarded one goal. The umpires should instruct the goal judge to wave his flag to indicate that a goal has been awarded. The game

shall be restarted by the umpire throwing in from the spot ten yards from the centre of the goal of the team that fouled towards the boards, with his right side nearest to the backline. The clock will be restarted when the ball leaves the umpire's hand. Ends shall not be changed.

b. Penalty 2 - Hit from the Spot or 30 Yard Hit

If the foul occurred within the defender's 30 yard line and a Penalty 2 is awarded then, as a first step on awarding the penalty, the umpires will give a choice to the captain of the team fouled of:

- Either: 'Spot', a free hit or hits from the spot where the foul occurred.
- Or: '30', one hit only from the 30 yard line, opposite the centre of the goal.

If the foul occurred outside the 30 yard line, then a hit from the spot is not offered.

(i) Hit from the Spot – Spot Hit - Defended.

- The striker may hit or tap the ball more than once (but see Rule 33o). The remainder of his team must be behind the ball when it is hit or hit at.
- The team facing the hit must be behind their back line and at least 30 yards from the ball until it is hit or hit at. They may not stand between the goal posts nor behind the goal, and they may not enter the playing area through the goal when the ball is brought into play nor subsequently during this phase of play.

(ii) 30 Yard Hit - Undefined.

- The striker may hit or hit at the ball only once. The rest of his team must be behind the ball when it is hit or hit at and have no play.
- The team facing the hit must be behind their back line, may not stand between the goal posts nor behind the goal, and must allow the ball to come to a rest. They have no play and any intentional or unintentional distraction will result in the penalty being retaken if no goal has been scored.
- Should the ball on the one hit fail to cross the goal or back line or rebound into play off a goal post the Umpire should blow his whistle; the team facing the hit will be awarded a hit from where the ball came to rest, as for a Penalty 5a. The ball may be moved outwards towards the boards or sideline should a goal post interfere with the player taking the hit.

If any member of the team facing the hit is seen to be fouling during the taking of the hit the umpire should wait to see if a goal is scored and, if so, a goal shall be awarded, the goal judge should wave his flag and play restarted as normal with a throw in from the centre or as allowed for in Rule 20c(ii). If a goal was not scored then the umpire should blow his whistle and order the penalty to be retaken.

c. Penalty 3 - 40 Yard Hit - Defended

The ball is placed on a cross 40 yards out from the centre of the goal. The option of a hit from the spot is not offered.

(i) The striker must have the intent to score with one hit. The rest of his team must be behind the ball when it is hit or hit at.

(ii) The team facing the hit must be behind their back line until the ball is hit or hit at following which point they may make a play. They may not stand between the goal posts nor behind the goal, and they may not enter the playing area through the goal when the ball is brought into play nor subsequently during this phase of play. If any member of the team facing the hit is seen to be fouling during the taking of the hit, the umpire will raise an arm and wait to see if a goal is scored.

- If the one hit has or would have gone through the goal if it had not been stopped or deflected by a stick or a pony, a goal shall be awarded, the goal judge should wave his flag, and play restarted as normal with a throw in from the centre or as allowed for in Rule 20c(ii).

- If the penalty shot has missed or would have missed the goal or was stopped legitimately by a player but another player on his team fouled, the whistle shall be blown and the penalty retaken.

d. Penalty 4 - 60 Yard Hit - Defended

The ball is placed on a spot on the 60 yard line opposite the centre of the goal.

- (i) The striker must have the intent to score with one hit. The team taking the hit may place themselves where they choose.
- (ii) The team facing the hit must be behind the 30 yard line and may only make a play once the ball has been hit or hit at.

e. Penalty 5(a) - Hit from the Spot (see 39b)

A free hit at the ball from the spot where the foul took place, but at least four yards from the boards or side lines. A Penalty 5a will not be awarded against a defending team within their own 60 yard line but rather a penalty 2, 3 or 4 as appropriate.

- (i) The team taking the penalty may place themselves where they choose.
- (ii) The defending team must be at least 30 yards from the ball, and not behind it.

f. Penalty 5(b) - Hit from the Centre (see 39b)

A free hit at the ball from the centre of the ground.

- (i) The team taking the penalty may place themselves where they choose.
- (ii) The defending team must be at least 30 yards from the ball, and not behind it.

g. Penalty 6 - Safety 60 - Defended

Awarded when a player hits the ball over his own back line (See Rule 25a) or for unnecessary delay by a team hitting in (Rule 24e). The ball is placed on the 60 yard line opposite where the ball crossed the back line but no more than 40 yards out from the centre of the goal.

- (i) The striker must have the intent to score with one hit. The team taking the hit may place themselves where they choose.
- (ii) The team facing the hit must be behind the 30 yard line and may only make a play once the ball has been hit or hit at.

h. Penalty 7 - Throw In

A throw in from where the foul took place (See Rule 21).

i. Penalty 10 - Player Sent Off

(i) Penalty 10(a)

A player sent off for a full chukka or the rest of the chukka in progress in addition to any other penalty.

(ii) Penalty 10(b)

A player sent off for the rest of the match, in addition to any other penalty. (See also Regulation 4.3a(i))

The umpires must agree that a player should be sent off. If not in agreement, the referee must be asked to decide. The side to which the sent off player belonged shall continue with three players only and any player sent off must return to the pony lines. Umpires should make it clear to the player(s) penalised and to the captains of the teams which penalty has been given.

Note: In all cases in which a Penalty 10a or b is awarded a Report Form must be completed by the umpires.

41. YELLOW FLAG

This rule shall apply to all matches that are umpired by HPA appointed umpires.

- a. A Yellow Flag should be awarded for a serious or second personal foul or for a dangerous or deliberate foul and will always be awarded in conjunction with a penalty. It will therefore be in addition to any field or technical penalty awarded and shall be awarded like any other foul. Consequently, unless the other umpire disagrees, his agreement shall be assumed and there shall be no appeal against any Yellow Flag awarded.

- (i) A player who is awarded two technical penalties during one match (Rule 38) will be given an automatic Yellow Flag.
 - (ii) A player who is shown two Yellow Flags during one match will be automatically stood down for his next tournament match.
 - (iii) A player awarded three Yellow Flags in one match will be sent off for the rest of the match and stood down for his next tournament match.
 - (iv) A player who accumulates three Yellow Flags will be automatically stood down for his next tournament match.
- b. The next tournament match shall mean the next match of equivalent level or higher which the player concerned is scheduled to play when the last yellow flag was awarded or, if no such match has been scheduled, that for which the player concerned is next entered.
 - c. Yellow flags will not be discounted if a player is nominated to play as a replacement or substitute in a tournament match for which he was not originally entered.
 - d. Following a player being stood down, two Yellow Flags only are discounted.
 - e. A report form must be completed and retained by the HPA for all Yellow Flags awarded. Any Yellow Flags awarded in a season will not be carried forward to the next season.



THE HPA APP

The
Polo
Magazine

www.thepolomagazine.com



VIEW RULES AND REGULATIONS VIA THE HPA APP

The Hurlingham Polo Association and *The Polo Magazine* have been working closely together to develop a 'phone friendly' interface of the HPA website.

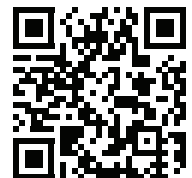
So you can do polo on the move.

This great 'APP' is available for download on iPhone and Android now, with Blackberry to follow.

To download either visit www.hpa-polo.co.uk

or for iPhone visit the APP Store

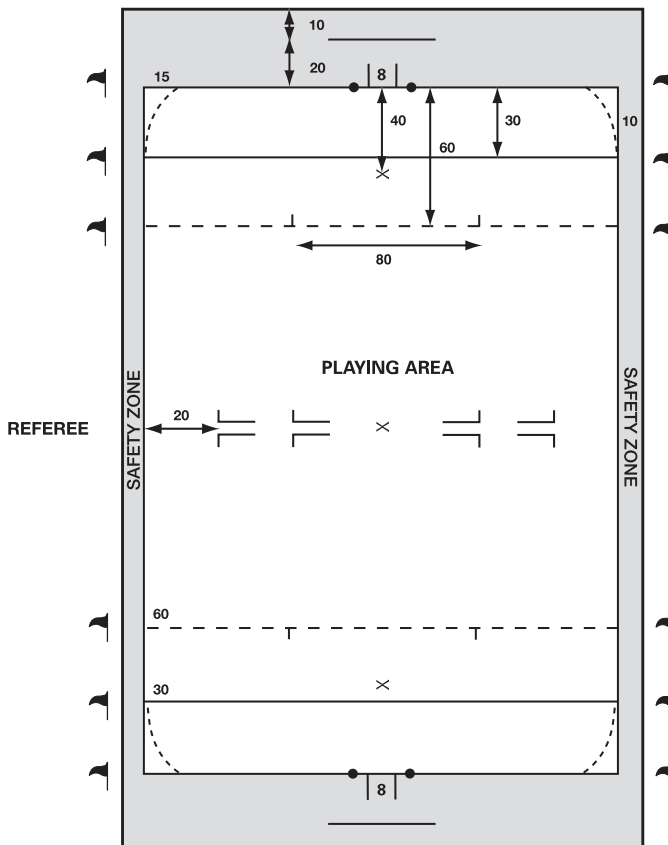
or for Android visit the Android Market.



Scan to download APP

ANNEX A - SUGGESTED LAYOUT OF THE FIELD OF PLAY

See also Rule 11



•
Sockets for widened
goals 4 yards out from
each goal post

Length: 300 yards (275 metres) maximum, 250 yards (230 metres) minimum.

Width: 200 yards (183 metres) maximum unboarded, 160 yards (145 metres) maximum boarded.

Safety Zone: At sides about 10 yards, at ends about 30 yards.

Markings: Broken lines or full marking may be used across the grounds. Marks on the boards or flags (clear of the safety zone) are useful as a guide to the umpires. Two short lines at right angles on the 60 yard line should be drawn 40 yards out from the centre of the goal.

A series of double tees with lines approximately two feet apart clear of the middle should be marked across the centre line of the playing area. A line of about 50 yards in length should be drawn at both ends about 20 yards from the back line as shown behind which the goal judges should stand.

Boards: Boards keep the ball in play, allow the ground to be narrowed and spread the game more evenly across the field. They should not exceed 11 inches in height and be of treated timber at least one inch thick. A metal peg should be inserted down the middle to secure them to the ground. They should be tongued and grooved at the ends or joined by a metal plate. A board should be easily replaceable during a match if damaged. A triangular arris rail (4x2in) may be fitted at the base of the board to deflect the ball back into play. Boards may be curved from the 30 yard line to 15 yards into the back line. Boards should be inspected regularly to ensure that pins are not proud on the top and that metal plates are flush with the surface and that there are no splinters to injure ponies.

ANNEX B - NOTES FOR OFFICIALS

1. **INTRODUCTION.** These notes are included in order to explain some of the tasks of referees, umpires and other officials. They are also designed to clarify and elaborate on some of the Rules of Polo and the penalties to be taken subsequent upon the infringement of these rules. The notes do not attempt to interpret all the incidents of play which are covered in the rules. They are not comprehensive and where there is apparent confliction the Rules of Polo take precedence.
2. **THE REFEREE.** The Rules shall be administered by a referee and two mounted umpires as laid down in Rule 7. The Referee has a very responsible position and he should have considerable polo experience at least to the level of the match that he is refereeing. He must be in an elevated and isolated position at the centre of the ground from which he can best observe the play. He must make his position known to the umpires before a match. He will be consulted if the two umpires disagree as to the foul or as to what penalty to award. Thus he must concentrate throughout the game, as the decisions he will make will have a bearing on its outcome. If in radio contact with the Umpires (see below) he may inform them at any time but preferably during a break in play if there has been any abusive or dangerous play off the ball, and invite them to take appropriate action. He must avoid distractions such as talking to neighbours or using a mobile phone. If an umpire appeals to the referee, he will in the first instance raise a hand and if the referee is satisfied that he saw and understood the play then he will confine his decision as to whether a foul occurred or not. If he considered that a foul did occur and it is obvious which side fouled, then he should raise one hand above his head and point with the other in the direction in which the hit is to be taken. If however he considers no foul occurred, or he could not see the incident because his sight was obscured, he should stand and make the wash out signal by moving his hands horizontally across his body.
 - a. **Consultation.** If the referee is in any doubt as to the nature of the foul or direction in which it should be given, he should make the come hither signal and move onto the ground. The umpires should canter towards him for consultation. This should be kept as brief as possible and be carried on out of earshot of the players and spectators. Alternatively, the umpires might wish to consult with the referee in their own right in which case they should proceed as above. On occasion the umpires will agree that a foul has occurred but disagree as to the penalty to be awarded. They will then point to the two alternative spots (e.g. centre or sixty) and the referee will point to the spot at which he considers the penalty should be taken. The Umpires should report to the referee at half time.
 - b. **Radios.** Ideally, the referee will be able to talk the umpires by radio during the match. This will allow the referee to assist the umpires and to brief the commentator about what is happening on the ground; eg, when a technical penalty is awarded or there is a stoppage owing to injury.
 - c. **One Umpire.** The Tournament Conditions may stipulate that there will be only one umpire in which case the referee has to act as a second umpire to whom the mounted umpire can appeal for assistance. In certain cases the referee too may be dispensed with.
3. **THE UMPIRES**
 - a. **General.** The authority of the umpires should be absolute in all matters affecting the conduct of play immediately before, immediately after and during play. Polo is one of the hardest games to umpire due to the complexity of the Rules, the speed at which it is played and the need to make immediate decisions based on an assessment of speed, angle and distance. The good umpire must therefore know the rules, concentrate on the play throughout and be consistent, clear and decisive in his judgements. In this way he will earn the respect of the

players and make his task much easier. He should treat the players with fairness and understanding being ready to defuse any potentially explosive situation; he should be a dictator without being dictatorial. The umpires should do all that they can to make a game flow and minimise delays but at the same time punish offences and maintain firm control. It is not in the gift of the team captains to agree time out except if agreed for friendly matches or if one or other team is on borrowed ponies. Should the umpires decide that a match should be stopped, normally due to inclement weather making playing conditions unsafe, they should consult with the two team captains. If the game is to be stopped then the responsibility for restarting, rescheduling or scoring the match as if completed (See Annex D paragraph 7) rests with the Tournament Committee. (See also Rule 5d and Annex C para 11.)

- b. **Selection.** There will normally be two umpires but the Tournament Committee may stipulate that there be only one umpire. They should select the umpires for a match with care. For preference, those who have an interest in the outcome of the match and those who have a relative playing should not be asked to umpire. The Committees should use discretion when selecting umpires avoiding as far as possible those who have a record of dissent from certain teams. There are never enough experienced umpires to go round so a pairing with one less experienced is to be encouraged, not least to give the latter a chance to learn. A team captain may inform the Committee that his team is not happy with a certain umpire before the tournament but once the umpire has been appointed he may not appeal in any way against the appointment. The referee and umpires will be equipped with radios for all Victor Ludorum matches umpired by the Professional Groups.
- c. **Line of the Ball (LOB) and Right of Way (ROW).** It is very important that the Umpires understand the meaning of the Right of Way which is set out in detail in Rule 32 b. The umpires must watch the play very closely to pick up the Line of the Ball every time the ball is hit and from this they must judge which player or players have the Right of Way. In general terms the player following down the line with the ball on his offside has precedence over all others. A player riding in the direction that the ball is travelling at an angle to its line has the ROW over a player meeting at an angle but two players with one meeting and one following on the exact line have equal rights. A player who strikes the ball and then deviates from its line surrenders his right to the ROW. Two players making a play on each other, whether following or meeting, have the ROW over a single player coming from either direction (Two Against One Rule). A player playing the ball on his nearside has no claim to the ROW but may continue to play the ball as long as he does not endanger a player who can legitimately make a play. Should a player check on the ROW an opponent may enter and take up the ROW providing it was safe for him to do so. Should he do so safely then the player who gave up the ROW cannot accelerate to ride into his opponent from behind. Equally an opponent may not ride into an opponent with the ROW in such a way as to cause him to hook up to avoid a nasty ride off.
- d. **Crossing, Turning the Ball, Blocking and Tapping.** Umpires must take particular note of Rule 33a. which deals with crossing; the fundamental rule of play. Whether a player crosses the ROW of another player in such a way as to foul is a judgement call by the umpires and will depend on their assessment of danger based on speed and distance. In open play the call is often easy enough but is more difficult when a player turns with the ball with an opponent following in close order behind. The player following has to commit to the play and cannot be judged to have committed if he checks or turns in anticipation of a backhand. The umpires must make a judgement on the level of commitment and be prepared to penalise the player turning before a collision occurs. A player may not block the progress of an opponent who is on the ROW by positioning himself in such a way that his opponent cannot move forward. However a player who taps the ball under an opponent's pony and turns onto the new line claiming a foul

must himself be penalised. Rule 33o. states that a player who chooses to stop or slow down to walking pace when he is being challenged but is neither being blocked nor ridden off may tap the ball only once in any direction after which he must leave it, accelerate with it or hit it away. Furthermore should he leave it for a player following, whether challenged or not, then that player must immediately run with it or hit it away without the luxury of a tap.

- e. **Preparation.** An umpire should arrive at the ground at least ten minutes before the match is due to start. He should be smart in appearance; dressed in white with boots and helmet. He must report to the club official in charge of umpires for his match and be issued with an umpire shirt, whistle and pick up stick. He should then check the pony which he has been allocated to ensure that it looks up to the job and that it is fully tacked for polo with ball bags (tail bandages are optional). It is extremely important that the umpires are well mounted on reliable and fit ponies. It is not sensible to allocate a green or unfit pony as the umpire will not be able to carry out his duties effectively and the pony may be damaged. The Polo Manager will give the umpires the go ahead when the teams are ready and all his officials, including medical and veterinary, are in place. He should also brief the umpires if there is going to be a parade before the match. If so, it is advisable for the umpires to have tossed up to decide ends before going onto the ground. The umpires should take the following action at this time -
- Ride onto the ground together at least two minutes before the scheduled start time of their match, with the teams if there is to be a parade.
 - Blow their whistles to check their efficiency and alert the teams.
 - Check on the teams' colours to ensure that there is sufficient contrast. The Polo Manager should have already done this but the Umpires have the ultimate say.
 - Check on the referee and locate him.
 - Check on the location of the medical support.
 - Check that the Time-keeper and Scorer are alert.
 - Check the scoreboard to ensure any handicap difference has been correctly credited.
 - Decide on which side and back line each is to take. They may swap at half time if the sun is troublesome.
 - Establish who are the two team captains, call them together and toss for ends. The captain of the visiting team is normally asked to make the call. The captains should also be asked at this time if they agree with the score as posted. Once the ball has been thrown in there is no redress.
 - Be prepared to penalise any player who whips his pony before the ball has been thrown in.
 - The umpires should now be ready to throw in the ball. Should however one Umpire be late the team captains on being asked by the Polo Manager, may agree for the game to be started with one umpire.
- f. **Working Together.** The umpires are a team and must work together. The more experienced Umpire of the pair must do all that he can to bring his partner with him and encourage him to make his own decisions. If the more experienced Umpire takes upon himself the decision as to a foul without consulting his partner he will undermine his position and allow the teams to drive a wedge between them. Umpires will inevitably disagree but they must be aware that too frequent reference to the referee will delay the game unnecessarily and serve as above to undermine their authority. The umpires after discussion are perfectly entitled to throw the ball in without reference to the referee.
- g. **Umpire Positioning.** Having agreed before the start which side and back line each should take, the umpires should try to complement each other in order to cover the whole ground, similar to partners in a doubles tennis match. The correct position should be one Umpire trailing the play on the line of the ball and the other level and parallel with the play. Notwithstanding an Umpire's position on the ground, he must not hesitate to blow his

whistle if he sees a foul as his partner may have been unsighted or be in the act of turning. It is above all imperative that the umpires keep up with the game to make the correct decisions swiftly and to maintain control. However the umpires should try to keep out of the game keeping on a flank or behind. Should the ball hit an umpires' pony, play will continue.

- h. Stopping The Play.** The whistle must be blown decisively and loudly with one long blast which will stop the play and the clock. The umpire should have the whistle in his mouth or his hand ready for instant use. If the decision to blow is delayed the moment will have past and the foul may go unpunished or, if blown late, the call will cause confusion and loss of confidence.
- (i) The umpires must remember that the Time-keeper acts on their whistle and unless blown loudly he may not hear it, particularly if there is a strong wind or background noise. In general terms the whistle should not be blown when the ball goes over the boards, back line when hit by an attacker or when a goal is scored. The umpire, particularly if he is alone, may however blow the whistle to stop the clock after suitable elapsed time to allow himself to get into position for a throw-in.
 - (ii) Umpire A having blown his whistle should check quickly that Umpire B agrees with the foul and the proposed penalty. This should be done by pointing or other pre arranged signal. Discussion between the umpires should only take place if there is disagreement so that delay is cut to a minimum. If they still cannot decide then they must refer to the referee by raising a hand and cantering over towards him. This procedure can be short-circuited by Umpire B if he believes Umpire A has made a wrong call, by raising his hand to obtain a decision from the referee. As an overall consideration nothing is more damaging to the authority of the umpires and to the flow and enjoyment of the match than delays caused by excessive consultation between the umpires and the referee. Decisive, immediate and firm action is to be preferred to shilly-shallying and consultation which often results in no more than a throw-in.
 - (iii) Once they have agreed that one or other side has fouled then the umpires must decide on the penalty to award. In doing so they must remember that the side defending the penalty, i.e. the side that has fouled, have the opportunity to regroup and get into the best position for defence. Thus the penalty should be made to count, being moved up the ground if the defending team have fouled and, at the very least, a hit from the spot if the attacking side fouled. Having agreed on the penalty to be awarded, umpire A should announce 'Cross against Red, free hit from the spot' and without waiting canter to the spot where the foul occurred drop the ball and take up his position
 - (iv) Should the referee signal 'No Foul' then the umpire should throw in the ball at the spot where it was when the whistle was blown towards the nearest boards or sideline. (Rule 27b).
 - (v) The umpires should use the Advantage Rule (Rule 26a) with discretion as the side fouled would often prefer a penalty rather than to have play continue. It should not be used if the foul was deliberate or dangerous.
 - (vi) If a player is disabled by a foul, every effort should be made to find a qualified substitute. On occasion this may not be possible in which case the umpires, in consultation with the referee and the captain of the team fouled, may decide to remove a player from the side that fouled (see Rule 29b(ii)).
 - (vii) If a player requests that play be stopped for whatever reason but usually for a lame or distressed pony and the umpires are satisfied that that the request is genuine then all players may change. Should they not be satisfied then only that player and members of the other team may change but play will be started as soon as the player who made the request has left the ground. (See Rule 30c). Note that play will not be stopped for lost or broken tack which in the opinion of the umpires does not constitute a danger. (Rule 26b).

- i. **Appealing.** Rule 1b(v) states that “a player may not appeal in any manner”. This is probably the most frequently broken rule in the book and one in which umpires must use a certain amount of discretion. If a player sees an opponent about to commit a foul which may endanger him or his pony, his instinctive action is to raise his stick, and sometimes his voice as a warning; that is to say he is more interested in self preservation than hitting the ball and inter alia as a signal to the umpires that he thinks a foul is about to be committed. The umpires must be aware that appealing with a stick or verbally is a foul and thus under normal circumstances must be penalised. Any form of frantic waving of the stick in the air (helicoptering) must always be a foul as it constitutes a danger to other players and their ponies. Sometimes the umpires can pre-empt a potentially explosive situation by calmly explaining why the foul was given. They should not under any circumstances, either during or after a game, enter into discussion with the captains or any other player as to their conduct during the game.
- j. **Report Forms.** The umpires are required to fill in a Report Form (Rule 6) for any irregularities or incidents of misconduct and submit the form to the Tournament Committee immediately after the game. The Tournament Committee will take such action as they consider necessary and forward the form to the Chief Umpire or HPA Welfare Officer as appropriate.
- k. **Pony Welfare.** Umpires are responsible for the welfare of the ponies during play in particular they must check the length and serviceability of whips, length and sharpness of spurs. A pony showing signs of distress or with blood in its mouth or on its flanks must be sent off. A player may not whip his pony other than in exceptional circumstances, eg if his pony kicks another, when the ball is dead. In play, a player should be penalised if he strikes his pony hard, eg with such force so that the crack can be heard around the ground, or is persistent in the use of the whip. (See Rule 37b.) See Para 5 for the duties of the Club Welfare Officer.
- l. **Throw-in. (See Rule 21).**
 - (i) **General.** Umpire A, who is to throw in the ball, must ensure that the teams are lined up on a T or equivalent with the nearest players at least five yards from him and with a distinct gap separating the two teams who must remain stationary. There shall be no contact between players on opposing sides before the ball is thrown in. Umpire B will be about forty yards away at the back of the throw-in ready to move parallel and level with the play. The ball should be thrown-in hard and under hand so that it remains low to prevent players hitting wildly in the line-out. All rough and dangerous play should be penalised instantly but umpires should not penalise players for crossing until the ROW has been clearly established as the ball leaves the lineout. Umpire A will take up position as trailing umpire.
 - (ii) **Centre.** Used when starting or restarting after a goal has been scored or the goal posts have been widened. After a goal has been scored, Umpire A should ride back to the centre as if from the back line, allowing a reasonable time for the teams to get into position before throwing the ball in. Should the umpires inadvertently allow the teams to line up the wrong way there is no immediate redress but if by the end of the chukka no further goal has been scored, then ends should be changed and play started at a corresponding position in the other half of the ground.
 - (iii) **Boards.** Used when the ball is hit across the boards or sidelines. Umpire A stands with his pony at least 5 yards inside the boards with the teams lined up at least 5 yards from the umpire and separated until the ball is thrown in. Thereafter proceed as above.
 - (iv) **Towards the Boards.** Used to restart the game at a spot if a Penalty 7 has been awarded, a foul has been overruled, the ball is buried or damaged, after an accident or incident which has caused play to be stopped, unnecessary delay in taking a penalty or as the second element of Penalty 1. Proceed as from the centre.

- m. **Hit In.** Umpire A, on whose side the ball has been hit out over the back line, should be behind the ball but clear of the goal so that he can see the exact line and get a clear view of an opposing player coming in for a meet. He will become the trailing umpire. When he is satisfied that both sides are in position, and no unnecessary delay has occurred, he should call 'Play'. Umpire B should be keeping an eye on the 30 yard line to see that the opposing side do not cross the line before the ball is hit or hit at. Umpire B is in the parallel position and should move up the ground level with the play. Should there be unnecessary delay by the side hitting in, a Penalty 6 shall be awarded. If the opposing side cause unnecessary delay then the hit in is moved up to the 30 yard line.
- n. **Accident or Injury to Player or Pony (Rule 29 and 30).** The umpires have a responsibility to do all that they can to prevent accident or injury to players or ponies. For example, if a player is behaving dangerously so as to be a hazard to himself or other players he must be warned, penalised and if necessary sent off. Common faults are dangerous use of the stick particularly in a melee, zigzagging in front of another pony, slowing down on the ball and hitting the ball hard into a crowd of players. Equally a pony which is out of control or has dangerous tack must be ordered off to prevent injury to others. Should an accident to a player or pony occur then the umpires must immediately take charge. If a player is injured then the umpires should stop the game and summon medical assistance by waving the pick up stick above the head. They should keep players and any others who come onto the ground away from the medical team except those who are actively helping. They should consult with the Team Captain of the injured player about possible substitutes and keep the commentator informed as to what is happening. (See Annex C paragraph 2 for Substitution in High Profile Matches.) Taking into account the paramount need to treat the injured player in the best conditions possible, the umpires should endeavour to restart the match as soon as possible. They must get clearance from the Medical Officer before allowing a player, who could have suffered concussion, to play. If there is no Medical Officer present then this responsibility devolves onto the umpires. If a pony falls or appears to be lame, the umpires must stop the game and see that the pony is trotted up. If not sound it should be taken off the ground in the most humane way possible. Should a pony be badly injured or stay down the umpires should ask the players to form a circle to shield the pony from spectators. If a Veterinary Officer is present, then he will take charge otherwise the umpires should ensure that screens are erected, if necessary, and the pony is removed by trailer from the ground as humanely and speedily as possible. Try to keep the commentator informed to cover up as best he can.
- o. **Penalties.** There are ten specific penalties listed which umpires will use to penalise players for breach of the Rules. They should know both the number and name of the penalties but in any event they must know the name. The majority of penalties in common use involve a hit by the side fouled but the umpires may award a throw-in if a penalty is incorrectly taken after the ordering off of a pony or player or sending off a player. Umpires must ensure that any penalty awarded is appropriate to the foul committed, taking into account the direction of play, severity, position on the ground at which it occurred and prevalence. They must be consistent in their award, showing equal disfavour to both sides within the above parameters. Rule 39 covers the correct taking of penalties. In brief, teeing up is not allowed and only one player may position the ball, provided he takes no longer than 15 seconds. If the ball rolls into a hole, it may be repositioned once but not after 'Play' has been called. Nor is the striker allowed to circle once the umpire has called 'Play'. Failure to comply is penalised with a throw in from the spot (Penalty 7) where the penalty was to have been taken. The ball is in play the minute it has been hit or hit at. When taking Penalty 3, 4 or 6, the striker must show the intent to hit the ball with one stroke through the goal. Should the ball fail to reach the back or goal line then play will continue as normal except that during this phase of play the striker or his team mates may only hit the ball with a half shot ie with the head of the stick starting

the shot below the shoulder. Failure to comply will be penalised by a free hit from where the penalty was taken. For Penalties 5a & b the umpire will place the ball ensuring a good lie. The striker and other members of his team may not replace the ball. For rules governing the taking of other penalties see below.

- (i) **Penalty 1 (Dangerous or Deliberate Foul to Save a Goal).** The umpires, having awarded Penalty 1, shall instruct the goal judge to wave his flag to signify a goal. The game shall be restarted by the umpire throwing in from the spot ten yards from the centre of the goal of the team that fouled towards the boards, with his right side nearest to the backline. Ends shall not be changed.
- (ii) **Penalty 2 (Hit from the Spot or Thirty Yard Hit).** Should the captain of the team fouled elect to take the hit from the spot then Umpire A will place the ball on the spot where the foul took place and stay behind the striker who may hit or tap the ball as many times as he wishes. Umpire B should meanwhile take up position 30 yards from the ball parallel to the back line to ensure that the defending players are correctly positioned (30 yards from the ball behind the back line, off the playing area and not between the line of the goal posts extended.) They may play as soon as the ball is hit or hit at so the umpires must be alert to see that no defender moves forward before the ball is hit or hit at nor comes onto the playing area through the goal. Should they do so then Umpire B should raise his hand and proceed as laid out in Rule 40b(ii). Should the captain elect to take the hit from the 30 yard line or the foul occurred outside the 30 yard line and a Penalty 2 has been awarded, Umpire A should place the ball on the line opposite the centre of the goal. Umpire B will be behind the left hand goal post looking onto the field with the goal judge behind the other. The striker has only one hit at the ball and may not circle. The defending team have no play. Should the ball fail to cross the back or goal line on the one hit then Umpire A will blow his whistle and award a free hit to the defending side from the spot where the ball came to rest; moving the ball outwards if a goal post would have interfered with the run up.
- (iii) **Penalty 3 (Forty Yard Hit).** Umpire A drops the ball on the cross at 40 yards from the centre of the goal. The option of a hit from the spot is not offered. The stiker has one hit only and may not circle. All defenders to be behind the back line and not between the line from the goal posts extended. Umpire B will be on the back line about 30 yards out from the left hand goal post looking onto the playing area to check that a player does not cross the back line before the ball is hit or hit at and that no defender enters the playing area through the goal during this phase of play. Should a defender foul then proceed as in Rule 40b. The goal judge will be behind the goal in the centre but well back.
- (iv) **Penalty 4 (Sixty Yard Hit).** Umpire A drops the ball on the 60 yard line opposite the middle of the goal and takes up position behind the striker. Defending players to be behind the 30 yard line. Umpire B will be behind the left hand goal post as he looks out from the back line with the goal judge on the right post. The striker only has one hit and may not circle. The umpires must watch the flight of the ball carefully as many disputes arise as to whether the ball went between the inside edge of the posts projected vertically upwards or not. In the event of dispute, their decision, not the goal judge's, is final but they should give the benefit of the doubt to the side defending. They should be on their guard to penalise a full shot after the initial hit (Rule 39e).
- (v) **Penalty 5a (Hit from the Spot).** Umpire A places the ball ensuring a good lie where the foul took place. Umpire B positions himself down field to ensure that none of the defending side are closer than 30 yards to the ball or behind it. Penalty 5a should not be awarded against a defending team within their own 60 yard line. The umpires should award a Penalty 2, 3 or 4 as appropriate taking into account the point where the foul took place, the severity of the foul and the likelihood of a goal being scored if the attacker had not been fouled. There is no rule to say that the ball may not be taken back for a Penalty.

- (vi) **Penalty 5b (Hit from the Centre).** Umpire A places the ball ensuring a good lie on the centre line opposite the centre of the goal. Umpire B acts as in Penalty 5a.
- (vii) **Penalty 6 (Ball hit behind by Defender).** This penalty is awarded if a defender hits the ball over his own back line (Rule 25) either directly or off his own pony or after glancing off the boards or goal post. If however it strikes any other player or an umpire before going behind it is a hit in. Umpire A places the ball on the 60 yard line opposite where it went out of play over the back line but not more than 40 yards from the centre. Umpire B will take the left hand goal post in line with the ball with the goal judge likewise on the right. None of the defending side to be forward of the 30 yard line. The attacking side can be where they choose. It may also be awarded for delay in hitting in (Rule 24e).
- (viii) **Penalty 7 (Throw-in).** The umpire may award a Penalty 7 for the incorrect taking of a penalty from the spot where the penalty was due to be taken. They may also award a Penalty 7 for unnecessary delay or for any other offence which would penalise too severely the team against whom it was awarded.
- (ix) **Penalty 10 (a) (Player Sent Off for Rest of the Chukka).** The umpires may send off a player for a chukka or the remainder of a chukka, in addition to any other penalty, for a foul or conduct prejudicial to the game (Rule 38). The player sent off must return immediately to the pony lines and the game will continue with three players on the side penalised. Before they send off a player, the umpires must be in agreement. If not then the referee must decide. The umpires must make it clear to the player being sent off and his team captain whether they have awarded Penalty 10(a) or 10(b), particularly in the last chukka. The umpires must complete a report form at the end of the match and hand it to the Polo Manager of the host club. Any substitution must comply with Rule 2k.
- (x) **Penalty 10 (b) (Player Sent Off for Rest of the Match).** The umpires may send off a player for the remainder of the match for a similar but more serious offence than Penalty 10(a). The same restrictions will apply.

4. CLUB WELFARE OFFICER

Every club should appoint a Welfare Officer to oversee the welfare of all the ponies owned by members of the club and also those that may be visiting for matches. The ultimate responsibility, however, remains with the owner (See Regulations Annex B 5.1). Club Welfare Officers are expected to attend the HPA Welfare AGM held in April. During matches they should monitor the pony lines to ensure that the HPA guidelines are observed. They should take note of the HPA booklet 'Polo Pony Welfare Guidelines', Annex B to the Regulations and Rules 3 and 4. Although umpires are responsible for pony welfare during a match, Welfare Officers should nonetheless take note of any abuse by players and bring it to the attention of the Tournament Committee if the umpires fail to react. A report form (see Rule 6) may be completed and sent to the HPA Welfare Officer. During the off season they also have the responsibility to monitor the overwintering of ponies in their area. They should be in close touch with the Club's designated veterinary practice to ensure that during matches cover is in place as laid down in Rule 4b. They should ensure that a horse ambulance is on standby at every match and that the team operating it have practised procedures (Rule 4o) and finally, should the worst happen, they should be conversant with para 7 of Annex B to the Regulations (Pony Put Down). As well as a winch and screens the horse ambulance should carry ropes, a drag mat, a spare headcollar, a tarpaulin, a bucket of sand and a knife for slitting saddlery.

5. THE TIMEKEEPER AND SCORER

- a. **General.** Rule 9 states: 'A Timekeeper/Scorer, referred to hereafter as the Timekeeper, shall be employed in all matches with an Assistant Scorer who shall man the scoreboard'. In many cases, the Timekeeper and Scorer will be the same person.

b. **Timekeeper.** The Timekeeper should be conversant with Rules 14 to 31 which govern his responsibilities.

(i) **Clocks.** The Timekeeper must be provided with a proper polo stop-clock, which can be stopped and started at will. This clock will govern the time, the clock on the scoreboard is for guidance only. He will also require an ordinary stopwatch as a back up and to time the extra 5 seconds of play (see below).

(ii) **Five Minute Bell.** The timekeeper will ring the bell five minutes before the advertised time for the start of the match to alert the teams and officials. If the players are not responding, he may be requested to ring the bell again to help get the match underway. He should not start the clock until play actually starts.

(iii) **Stopping the Clock.** The time during which a penalty is being awarded or an accident being dealt with does not count in the 7 minutes playing time. The fact that the time is not to be counted (i.e. the clock is to be stopped) is indicated by the umpire blowing one firm blast on his whistle.

Note that the clock is not stopped when a goal is scored (except as (iv) below), the ball goes over the back line for a hit in or over the sidelines or boards.

(iv) **Starting the Clock.** The clock should be restarted once the umpire has said 'Play' and the ball is hit or hit at. On occasion the umpires will blow for a foul as a goal is scored. Should the goal be awarded they will instruct the goal judge to wave his flag and at this moment the clock should be restarted. However should the umpire blow his whistle for a second time this will indicate that a penalty has been awarded in which case the clock should not be restarted until the penalty is taken. In the case of a Penalty One being awarded the clock is restarted when the ball leaves the umpires hand for the throw in.

(v) **Ringing the Bell.** It is the Timekeeper's duty to ring the bell when 7 minutes of playing time has elapsed, and again 30 seconds later if play has not already stopped. Great care must be taken that the first stroke of the bell coincides exactly with the termination of the 7 and 7½ minutes as the ball may go through the goal just before the first stroke of the bell in which case the goal should be allowed or just after in which case the goal should be disallowed. The Timekeeper's responsibility in this matter is therefore of great importance.

(vi) **Intervals.** Between each chukka there is an interval of 3 minutes. In all matches there is a half-time interval of 5 minutes. In a 5 chukka match, the interval is taken after the 3rd chukka. Should play begin before the 3 minutes are up, it is unnecessary to ring the bell but the clock should be started at the moment that play begins. If the play has not begun at the end of each interval, then the Timekeeper shall ring the bell, but he must not start the clock until play actually begins. In the event of a tie requiring that an extra chukka be played, the interval shall be 5 minutes. In this case it is the umpire's duty to see that the game is not started again until the 5 minutes interval has been taken.

(vii) **Additional 5 Seconds.** Rule 16c is extremely important to the Timekeeper, as he is the only official who can carry out this rule.

c. **Scorer**

(i) **Before Match.** The Polo Manager should provide a score sheet completed as far as possible. From this sheet the handicap received by a team will be put on the board by the Assistant Scorer (see below for table of Goals Awarded on Handicap). The Scorer will particularly note the colours in which the teams are playing and alter details on the score sheet if necessary.

Table of Goals Awarded on Handicap

Handicap Goal Difference	Six	No of chukkas		
		Five	Four	
1	1	$\frac{1}{2}$	$\frac{1}{2}$	
2	2	$1\frac{1}{2}$	$1\frac{1}{2}$	
3	3	$2\frac{1}{2}$	2	
4	4	$3\frac{1}{2}$	$2\frac{1}{2}$	
5	5	$4\frac{1}{2}$	$3\frac{1}{2}$	
6	6	5	4	

- (ii) **During Match.** The Scorer will record the goals scored (noting if possible the name of the player scoring the goal, the time at which the goal was scored and the direction of play). He will instruct the Assistant Scorer to put up the score on the board being particularly careful to check that the correct team has been credited. At all times it is the Scorer's figures that count.
- (iii) **End of Match.** At the end of the match, the Scorer will add up the goals received on handicap and scored, fill in such details as weather, the time the match was completed and any unusual occurrences, sign the form as correct and hand it in to the Polo Manager. This score sheet will then act as the official record of the match.
- (iv) **Objections.** No objection may be lodged after the game to the Tournament Committee, umpires or the goal judges as to whether a goal was scored or not, or an error was made in recording the score or team handicap. Note, however, that it is the duty of the umpires to draw team captains' attention to the score as posted before a match (i.e. any goals received on handicap) and changes may be made as agreed. However, thereafter no objection may be raised. If the umpires fail to carry out this duty, there can be no objection from either team.
- d. **Assistant Scorer.** The Assistant Scorer is responsible for preparing the scoreboard before the match, and updating goals scored and chukka numbers during the match. He should have communication with the Scorer if they are not sitting together.

6. THE GOAL JUDGES

- a. **General.** Rule 8 covers the role and duties of goal judges. Under the rules the Club has the responsibility to ensure that goal judges are fully trained, are fit and active, of an age as laid down by the Health and Safety at Work Executive, and have parental permission if required. It is recommended that Clubs draw up their own set of standing orders to be issued on signature to all goal judges. The Club must also ensure that a line is drawn 20 yards away and parallel to the goal line behind which the goal judge must stay during play and that spare goal posts and ball boxes are left no nearer than 30 yards from the goal line. Other items such as bicycles should be placed well away from the ground so as not to be a danger to horses. Goal judges must not be used when play is in progress simultaneously on two grounds with back-to-back goals.
- b. **Equipment.** The Club must issue goal judges with protective headgear (a cricket helmet is recommended) and distinctive clothing, normally white, and ensure that they are worn during play. Goal judges require a bag or box of balls, a white flag and access to spare goal posts.
- c. **Before Match.** Goal judges should be in position 10 minutes before the scheduled start of a match and should check that they have:
- A flag.
 - Sufficient balls in a box or bag.

- Immediate access to spare goal posts.
 - The ability to change a goal post if it is broken and widen the goals if required.
 - The goals post in the correct position and that they are vertical.
 - No impedimenta, other than balls, on the ground or within 30 yards of the goal line.
 - Distinctive clothing and are wearing a hard hat. Wet weather clothing should also be available.
 - Knowledge of the team colours so they can distinguish which side is attacking and which is defending.
- d. **During Match.** Once the match is started, the goal judge must observe the play carefully at all times as the situation can change very quickly. When play comes down the left hand side of the ground, the goal judge should begin to move to the right to keep the ball in his sight between the posts and if the play comes from the right, he should move to the left. At all times however, he must remain behind the 20 yard line until the ball is out of play and the ponies have slowed down. The goal judge must also keep his eye on the ponies as they approach to see which way they are turning or swinging. Evasive action should be taken if essential but it is often better to stand still as the player will turn away. It is an offence for two players to ride each other off over the goal line.
- e. **Goal Scored.** In normal play, if the goal judge is certain that a goal has been scored (i.e. the ball went over and clear of the goal line), even though play continues, he will wave his flag vigorously over his head until receiving acknowledgement from the score-keeper. It is some times difficult for the goal judge to be certain that a goal was scored as his view may be obscured, he may be taking evasive action or he may be confused by the flight of the ball. In this event, he should make no signal at which point the umpires should come to him to consult and then make their decision. The goal judge should never get into discussion with a player as he is answerable only to the umpires who should protect him from pressure and abuse. Once a decision has been made by the umpires, they will instruct him either to wave his flag to signify a goal or to place the ball for a hit in. The goal judge must also be on the alert for an umpire's whistle which will render the ball dead and thus, if it subsequently goes through the goal or over the back line, no action should be taken by him. In the normal course the umpires will award a penalty and play will continue with a hit or throw in.
- f. **Penalties.** For Penalty 2, if taken as a hit from the spot the goal judge to be in line with the ball, but if taken as a hit from the 30 yard line he should be on the right hand goal post looking onto the field. For Penalty 3 he should be behind the centre of the goal but well back. When Penalties 4 or 6 are being taken, the goal judge should be behind the right hand post as he looks onto the ground and one of the umpires will take the left hand post. For Penalty 6 the goal judge and umpire should be on the straight line drawn between the ball and the goal post. He should then be able to tell if the ball went over the goal line and inside the goal post projected vertically. Judgement may be required if the ball hits a flag blowing in the wind, if the ball swerves in the air or goes over the post. Before making a signal, the goal judge should receive confirmation from the umpire who will normally raise his hand if he is satisfied it was a goal. If the umpires award a Penalty One or a goal as a result of a foul by a defender, they will instruct the goal judge to wave his flag as if a goal had been scored.
- g. **Hit Over Back Line by Attacker.** If the ball was hit over the back line by an attacker, then the goal judge should signal by holding a ball above his head. When the ponies have slowed down he should run forward and place a ball just in front of the back line where it crossed but no nearer than 4 yards from a goal post or the boards. He should make a good lie for the ball otherwise time will be wasted as the striker tees it up. Remember that the clock is still running. Then pick up any loose balls and return swiftly behind the 20 yard line.

- h. **Hit Over Back Line by Defender.** If the ball was hit over the back line by a defender, then the umpires will award Penalty 6 which is taken on the 60 yard line opposite where the ball went out of play but no further than 40 yards out from the centre. The umpires might ask the goal judge for help in deciding if a defender or attacker hit the ball over the back line (see Rule 24 and 25).
- i. **During Match.** The goal judge may relax a little between chukkas and at half time although he must remain alert to players coming onto the ground to stick and ball. He can usefully tread-in in front of his own goal, collect up any stray balls and be prepared for the umpires to come up to him at this time to replenish their ball bags.
- j. **Two Goal Judges.** Should there be two goal judges for each goal, they will work as a pair covering each goal. They must be particularly alert to avoid being ridden down as the options for the players are reduced.

7. UMPIRE GRADING COMMITTEE

Every Associate Member of the HPA as well as being allocated a handicap should also have an umpire grade. Each member is assessed by an Umpire Grading Committee annually and the grade published in the Blue Book. It is incumbent on all those who play polo not only to know the rules but also to take their turn as umpires. Once a player has reached -1 handicap he is eligible and should be encouraged to take his C grade umpire test. Umpire tests are held in April and May and also at other times on demand. On passing the test he will be graded CP until he has umpired a sufficient number of games to satisfy his club that he be recommended to the Umpire Grading Committee for upgrading to C.



THE HPA APP

The
Polo
Magazine

www.thepolomagazine.com



VIEW RULES AND REGULATIONS VIA THE HPA APP

The Hurlingham Polo Association and *The Polo Magazine* have been working closely together to develop a 'phone friendly' interface of the HPA website.

So you can do polo on the move.

This great 'APP' is available for download on iPhone and Android now, with Blackberry to follow.

To download either visit www.hpa-polo.co.uk

or for iPhone visit the APP Store

or for Android visit the Android Market.



Scan to download APP

ANNEX C - GUIDELINES AND CONDITIONS FOR TOURNAMENTS

1. **GENERAL.** All matches will be played under HPA rules.
2. **OFFICIAL TOURNAMENTS AND PRIORITY.**
 - a. **General.** All Official HPA Tournaments are shown in bold italics in Section 4 of the Blue Book. All of these with the exception of those played at 22 and 20 goal level will count towards the points system for Victor Ludorum cups . The conditions for all other tournaments listed may be set by the host club, (but see Para 3). Official Tournaments will take priority over all other tournaments with those of higher goal taking priority over lower. All queries to be referred to the Stewards.
 - b. **Conditions.** Specific conditions are set out below:
 - High Goal (22) – 6 Chukkas.**
 - All players must hold an HPA handicap of 0 goals or above.
 - Teams are restricted to not more than two OSPs and each must be 4 goals or above.
 - Any sponsored player of 5 goals or below may not play until his club has been notified in writing that his HPA handicap has been confirmed and the brackets have been removed (see Regulation 6.5c).
 - Victor Ludorum High Goal (18) – 6 Chukkas.**
 - All players must hold an HPA handicap of 0 goals or above.
 - Teams are restricted to not more than two OSPs who must be 4 goals or above.
 - Any player of 2 goals or below must be either a patron or a HGP.
 - Victor Ludorum Medium Goal (15) – 5 Chukkas.**
 - All players must hold an HPA handicap of 0 goals or above.
 - Teams are restricted to not more than one OSP who must be 3 goals or above.
 - Any player of 2 goals or below must be either a patron or a HGP.
 - Victor Ludorum Intermediate Goal (12) – 4 Chukkas.**
 - All players must hold an HPA handicap of -1 goal or above but no higher than 7 goals.
 - Teams are restricted to not more than one OSP who must be 3 goals or above.
 - Any player of 2 goals or below must be either a patron or a HGP.
 - Victor Ludorum Low Goal (8) – 4 Chukkas.**
 - All players must hold an HPA handicap of -1 goal or above but no higher than 6 goals.
 - Teams are restricted to not more than one OSP who must be 2 goals or above.
 - Any player 1 goal or below must be either a patron or a HGP.
 - Victor Ludorum Low Goal (6) – 4 Chukkas.**
 - All players must hold an HPA handicap of -2 goals or above but no higher than 5 goals.
 - Teams are restricted to not more than one OSP who must be 2 goals or above.
 - Any player of 1 goal or below must be either a patron or a HGP.
 - c. **National Teams.** The conditions governing OSPs may be lifted for a national team which has been invited and approved by the Stewards or for an established overseas patron who wishes to play with an immediate family member who is also from overseas. In the case of a substitution in such a family team, normal tournament conditions and rules will apply.
 - d. **Team Change and Substitution in a High Goal Team.** The rules for team changes are laid out in Rule 1d and for substitution in Rule 2. The rules are designed to enable a team in which a regular member is unable to play for a bona fide reason such as injury to compete in such a way as to be fair to both sides. However, it is recognised that in high goal the replacement of an 8-10 handicap player by another within the rules may be almost impossible without unacceptable delay and expense. Thus, at this level, the rules are relaxed as follows:

* OSP = Overseas Sponsored Player ** HGP = Home Grown Player (See Status Guidelines at Annex E)

- (i) **Team Change.** This will apply at any time during or shortly before the tournament until immediately before or during a match when the change of player is deemed to be a substitution. A distinction is drawn between:
 - (a) **League Phase.** If a player is unable to play in the next match of the league phase, then his replacement in the team must be qualified under Rule 1c (iii) which specifies that a player may only play for one team in a tournament. If no qualified player of the same handicap is available then a double substitution may be made.
 - (b) **Main Knockout Phase.** If a player of 8 goals or above cannot play due to an injury certified by a doctor, that player may be replaced by a player who has played in the league phase but not in the knockout phase of the main tournament. Special rules, which should be detailed in the tournament conditions, may apply to any subsidiary knockout phase.
- (ii) **Substitution.** A substitution may take place if a player is unable to play through injury or other bona fide reason immediately before or during a match. As above a distinction is drawn between the:
 - (a) **League Phase.** A team may nominate a player of 8 goal or above who is playing in the tournament to act as a substitute in the event of injury etc to one of its players. The player may then come in as a substitute for a player of 8 goals or above. Otherwise the rules for substitution as laid down in Rule 2 apply.
 - (b) **Main Knockout Phase.** A team must nominate a qualified substitute for each of its players and give the list to the Polo Manager by 5pm the evening previous to the match.
 - Quarter Finals. For a player of 8 goals and above a similarly handicapped player who has played in the league phase and been eliminated is deemed to be qualified.
 - Semi Finals and Finals. For a player of 8 goals and above a similarly handicapped player who has played in the league phase or quarter finals and been eliminated is deemed to be qualified.

This does not prevent a team reverting to the substitution rules as set out in Rule 2.

(iii) **Ponies.** See Rule 1i.

e. **Officials.** Below are the recommended minimum grades for officials.

Level	First Umpire	Second Umpire	Referee
22 +	PP	PP	HPA
20	PP	PP	HPA
18	PP	PP	HPA
15	PP	PA	HPA
12 Semis , Main & Sub Final	PA	PA	HPA
12 Goal	B	B	B or 3 goal player
8 Semis , Main & Sub Final	PA	PA	HPA
8 Goal	B	B	C or 1 goal player

f. **Entry Fees.**

(i) As a guide Clubs should graduate the entry fee to the suggested maximum according to the matches to be played in the tournament. The suggested maximum, which does not include fees for umpire or other officials is:

High Goal 17- 22	£20,000
High Goal 15 - 20	£10,000
Medium Goal	£4,000
Intermediate Goal	£3,000
Low Goal	£2,000

(ii) The host club may arrange for qualifying matches of its tournament to be played at another club. For those teams that qualify, no transfer of the entry fee will be made by the host club. However, for each team that fails to qualify, a transfer of 75% of the entry fee will be made to the club which held the qualifying matches. Should a team play only

one qualifying match then that team will be refunded 50% of the original entry fee by the club that held the qualifying matches (ie if the entry fee is £1000, the team will receive £500 and the club holding the qualifying match will retain £250). A team which plays two or more qualifying matches will receive no refund (ie the club will retain £750).

- (ii) When a single match is played away from the host club, then 20% of the entry fee shall be paid by the host club to the club holding the match.

3. OTHER (NOT OFFICIAL) TOURNAMENTS.

- a. **Conditions.** Conditions for all other HPA tournaments may be set by the host club but clubs are encouraged to follow the guidelines as set out below:

Goal Level	Min H'cap	Max H'cap	H'cap limit of two Best Players
0	-2	3	3
2	-2	3	4
4	-2	4	6
6	-2	5	8
8 & Above	as for official HPA Tournaments.		

- b. **Team Changes and Substitution. See Rule 2.**

- c. **Officials.** Below are the recommended minimum grades for officials.

LEVEL	FIRST UMPIRE	SECOND UMPIRE	REFEREE
22+	PP	PP	HPA
20	PP	PP	HPA
18	A	A	A or 5 goal player
15	A	A	A or 4 goal player
12	B	B	B or 3 goal player
8	B	B	C or 1 goal player

- d. **Entry fees** – At the clubs discretion.

4. INTERNATIONAL MATCHES.

International matches will be played under HPA rules unless any changes have been mutually agreed by the team managers/captains and recorded in writing before the match. The International Committee have the responsibility to nominate the match officials in consultation with the Chief Umpire. A list of officials should be given to each team manager/captain who will make a selection in order of preference from the list. The Chief Umpire, in consultation with the Chairman of the International Committee will then make the final selection. Any umpire selected should be practised and fully conversant with the current HPA rules.

5. **ENTRY FORMS.** (See also Rule 1c) A Club wishing to run a tournament must prepare an entry form which should include the following:

- Name of tournament.
- Handicap level.
- Inclusive dates.
- Status (eg, official or if not, any special conditions that apply).
- Entry fee and note of any additional cost of officials, medical cover etc.
- Closing date of entry.
- Blank line so teams can enter dates on which they would prefer not to play.
- For leagues or groups whether matches are to be played to a result or may finish in a draw.
- Any disclaimer and additional information.
- Declaration as to eligibility of those entered.
- Signature Block.

To enter, the team captain/manager must submit a completed entry form and send it to the Tournament Committee with the entry fee before the closing date. As a general rule the Tournament Committee should accept all entries up to the closing date. They may try to achieve extra entries in order to give a better balance to the tournament (eg to achieve eight teams rather than seven) but the process should not be so drawn out that the issuing of the schedule is delayed. It is, however, at the discretion of the Tournament Committee to refuse an entry, to ballot out teams or to run a tournament on an invitation basis. The Tournament Committee should whenever possible arrange a balanced and achievable schedule for a tournament at their club. This may require teams entered to play qualifying matches at other clubs. This will be arranged by agreement between polo managers and clubs are expected to co-operate in accepting teams which may not be from their own club. (See 2f(ii) above). Qualifying matches are taken as part of the tournament and the rules on substitution and use of ponies shall apply (See Rules 2 and 1i).

6. **SCHEDULE.** Once entries have been received, the Polo Manager must decide, if it is not in the tournament conditions, whether the tournament should be run as a knockout, league, group or combination of both. He will know how many entries have been received, how many playing days are available and days on which teams would prefer not too play and have an idea of the constraints on the players. Based on all this he can decide the format of the tournament and can produce a schedule of the matches which should include where appropriate nominated umpires and referees. It has become increasingly popular to start a tournament on a league or group basis, finishing with a knockout, as this guarantees each team a number of matches and also enables a time table to be drawn up.
7. **WITHDRAWAL OR DISQUALIFICATION OF A TEAM.** See Rule 1g. If a team is disqualified or its withdrawal is accepted by the Tournament Committee and the team has already played in the tournament then, in a knockout, the team which they have played and beaten in the previous round may go through to the next round. In a league or group all the matches which the team has played will be declared null and void with points and goals gained by their opponents subtracted from their total.
8. **KNOCKOUT TOURNAMENT.** A knockout tournament is one in which teams are drawn to play preliminary rounds, quarter finals, semi finals and finals. Unless there are eight or sixteen teams in the tournament there will be a requirement to have bye rounds. The method of placing these is shown in the table below. It is often popular to have a subsidiary to the main tournament to give the teams beaten in the first round a minimum of two matches. The subsidiary matches should be scheduled so that they fall as close as possible to the time and date of the equivalent matches arranged for the winning teams.

Method of Drawing Byes in Tournaments – All Byes are in the first round

No of Teams	Byes at Top	Byes at Bottom
5	1	2
6	1	1
7	0	1
8	0	0
9	3	4
10	3	3
11	2	3
12	2	2
13	1	2
14	1	1
15	0	1
16	0	0

9. LEAGUES AND GROUP TOURNAMENTS

- a. **League Tournament.** A league tournament will consist of one or more leagues with each team in its league playing the other. When there is more than one league, the most successful teams go on to a main or subsidiary knockout dictated by an order of merit (see Annex D).
- (i) There should always be the same or more places for teams in a knockout than the number of leagues or groups.
 - (ii) Leagues of three teams are to be avoided if possible as they are more prone to match fixing than larger leagues. If used, the team that loses the first match in its league should ideally play the third team next so that the next league match will count towards the overall result
 - (iii) For reasons of time or availability it may sometimes be necessary to schedule a tournament in which all the teams in a league do not play each other; for example, if there are five teams and only time for each team to play two matches. Scoring will be as laid down in Paragraph 3 of Annex D.
- b. **Group System.** In each group there are two subgroups of two or more teams (each subgroup must have the same number of teams) which then play across so that each team in one subgroup plays each team in the other. The group system should be used sparingly but it may enable teams in a tournament to be given the same number of matches in the league or group phase, However, as all the teams within a group have not played each other, this system can sometimes lead to maverick results which are only partially offset by combining all the results within the group (See Paragraph 3 of Annex D).
- c. **Combined Leagues and Groups.** Sometimes, in order to achieve a uniform number of matches played, the league and group system can be combined. For example, if there are fourteen teams in a tournament, the Committee can schedule two leagues of four teams and a group of six teams (two subgroups of three teams each) so that every team plays three matches in this phase.
- d. **Progression to Knockout Phase.** Once an order of merit has been established (See Annex D) then a knockout phase may be held starting with a quarter or semi final or go straight to a final.

10. **ROUND ROBIN OR AMERICAN TOURNAMENT.** If three teams are to play on one day, then a Round Robin is a good answer. Normally each team plays two or three chukkas against the other. Two of the teams play consecutively e.g. the first four chukkas or the last four and the third team has a break in the middle. It is recommended that each match should end on the first bell whether the score is level or not and that two points are awarded for a win and one for a draw. To decide the order of merit refer to Annex D.

11. **PENALTY SHOOT OUT.** On occasion, particularly if teams have arrived to play when the field is considered unsafe, a penalty shoot out can be held. This will produce a result and give some enjoyment to players and spectators. The shoot out will be conducted as follows:
- The team handicaps will be calculated and posted as normal with the score at the point of abandonment if the match has started. A coin will be tossed.
 - Goals will be undefended. One strike only per shot at goal.
 - Player A from Team A will take two shots from the 30 yard spot followed by Player A from Team B and so on until all the players from each team have had two shots.
 - Player A will have two shots from the 40 yard spot and so on as for the 30 yard.
 - Player A will have two shots from the 60 yard spot and so on as for the 30 yard.
 - The score will be calculated on the number of goals scored divided by two.
 - If this results in a tie and a result is required the process will be restarted until a winner can be declared by sudden death.

The shoot out can take place at two separate locations and at different times. Should the match have started then the number of penalty shots to be taken can be reduced pro rata to the number of chukkas played. If used to break a tie then all team members should take a strike from the 40 yard spot and if still a tie continue until it is broken.

- 12. EXPENSES.** The Council has approved the following arrangements for the guidance of Club Secretaries when making arrangements for visits from other Clubs:
 - a.** At all tournaments or matches, official or unofficial, the Host Club may provide stabling, straw, hay and board and lodging for grooms on a repayment basis if prior arrangements have been made between the Secretaries of the Host Club and the visiting teams.
 - b.** It is suggested that the charges to be made are set out by the Host Club in their Schedule of Conditions for the tournament.

- 13. TROPHIES.** The Captain of a team winning any challenge cup is expected to have the name of the team and of its members engraved upon the cup at his own expense.

ANNEX D – ORDER OF MERIT WITHIN AND ACROSS LEAGUES & GROUPS

(See also Annex C)

1. GENERAL.

- a. This Annex lays down the rules for calculating the Order of Merit within and across leagues and groups and related issues. It should be read in conjunction with Annex C, Paragraph 8 - 10, which gives guidelines for running tournaments under the league and group systems.
- b. **Points System.** In each league or group a points system will operate for matches as follows:
Played for a Win: Win = 2 Lose = 0
Played for a Draw: Win = 2 Draw = 1 Lose = 0
- c. **Definitions.** The following definitions will apply throughout the Annex:
 - (i) Goals Scored. This is the sum of the goals scored by and accredited to a team.
 - (ii) Goals Scored Against. This is the sum of the goals scored by and accredited to the opponents of a team.
 - (iii) Goal Difference. This is the sum of the 'Goals Scored' by a team minus the 'Goals Scored Against'. It may result in a minus total.
 - (iv) League. A number of teams listed together which in the normal course play each other. Thus in a league of four each team plays three matches.
 - (v) Group. A group is divided into two subgroups, each subgroup having an equal number of teams. Each team plays a match against the teams in the other subgroup; thus with two subgroups of three teams each team will play three matches.

2. ORDER OF MERIT WITHIN A LEAGUE IN WHICH ALL TEAMS HAVING PLAYED EACH OTHER.

In a tournament that involves leagues in which all the teams within each league have played each other a record of the results should be drawn up as in the Examples.

- a. **Points.** The order of merit is established initially by taking the number of points scored by each team in its league (Example A).
- b. **Two Teams Tied on Points.**
 - (i) If two teams are tied on points, then the team that won the match between them goes above the other (Example B).
 - (ii) If the result of the match between the two tied teams was a draw, the first placed team will be that with the best 'goal difference' counting all the matches played by the two teams in their league.
 - (iii) If the teams are tied on 'goal difference', the first placed team will be the one with the most 'goals scored', again counting all the matches played by the two teams in their league.
- c. **Three Teams Tied on Points.** If three teams are tied on points, recalculate the points scored counting only the matches played between the tied teams thus:
 - (i) If this results in two teams still being tied on points, the team that won the match between them goes above the other.
 - (ii) If three teams are still tied on points, again taking into account the scores within the tied teams, the order of merit is established from the 'goal difference' credited to each team. Thus the team with the best 'goal difference' goes first, the second best goes second and the third goes third. If this results in two of the teams still being tied on 'goal difference', the team that won the match between them goes above the other.
 - (iii) If three teams are still tied then 'goals scored' shall determine the order of merit. If this results in two of the teams being tied on 'goals scored', the team that won the match between them goes above the other (Example E).

- d. **Four or More Teams Tied.** In the event that four or more teams are tied on points, then proceed as for three teams tied (Paragraph 2c).
3. **ORDER OF MERIT WITHIN GROUPS AND LEAGUES IN WHICH ALL THE TEAMS HAVE NOT PLAYED EACH OTHER.** In a tournament which involves groups or leagues in which all teams have not played each other, the result of all matches within the league and group will be taken. Thus for example with two subgroups, each of two teams playing across, the result of all four matches will be taken together (Examples C, D and F). The order of merit will be drawn up as in Paragraph 2 but note if teams have played each other then the winner of that match will go above in a two way tie (Example D).
4. **ORDER OF MERIT ACROSS LEAGUES AND GROUPS.**
- a. As a first step establish the order of merit within each league or group using the system laid down in Paragraph 2 or 3 above. The first team in each league and group have an automatic place in the knockout phase (see Annex C Paragraph 9).
- b. If it is necessary to establish an order of merit between the first placed teams in each league and/or group to allocate the playoff places in the knock out phase (see Paragraph 6 below), take all the matches that the teams have played in their league or group to establish the order of merit between them again using the system in Paragraph 2 or 3.
- c. If it is necessary to achieve an order of merit between the second or third and so on placed teams in each league and or/group proceed as for the first placed teams above. A Tournament Committee may however wish to include a special rule in the schedule if the tournament does include a group or groups as those teams in a group are at a disadvantage (there are always more teams than in a league) when an order of merit is drawn up using the system outlined above. (See Note 2 to Example J)
- d. In the event that there are an unequal number of teams in each league then eliminate the bottom team and recalculate the scores. The original placings will stand ie, the team that came first in the league before equalisation will remain first but the points, goal difference and goals scored credited to it after equalisation will be used for comparison with the equivalent placed teams in the other leagues. Thus, if required, an overall order of merit, involving all the teams in a tournament can be drawn up. (See Examples H and J).
5. **TEAMS STILL TIED.** If teams remain tied having applied all the above methods to separate them, then the Tournament Committee shall determine the order of merit by using another equitable test such as:
- The best 'goal difference' achieved in any one game.
 - The best 'goals scored' achieved in any one game.
 - A play off or penalty shoot out.
 - The toss of a coin.
6. **PLACING OF TEAMS FOR KNOCKOUT PHASE.** The order of merit as outlined in Paragraph 4 above will normally be used to place teams for the knockout phase of a tournament.
- | | | | |
|-----------------|-----------|--------------|-----------|
| Quarter Finals: | 1st v 8th | Semi Finals: | 1st v 4th |
| | 4th v 5th | | 2nd v 3rd |
| | 3rd v 6th | | |
| | 2nd v 7th | | |

If eight teams are to enter the knockout phase then quarter finals will be played but if only four then semifinals will be played. These placings may be altered for scheduling reasons or to avoid teams that have played each other in the league phase meeting in the early rounds of the knockout. A draw can also be made.

7. **MATCH NOT PLAYED OR COMPLETED.** If a match cannot be played or, if started, cannot be completed because of bad weather or any other reason every effort should be made to reschedule it so that it can be played or completed. If this is not possible consideration should be given to a penalty shoot out as outlined in Annex C paragraph 11. As a last resort the result of a match can be calculated as follows:
 - a. **If not played:**
 - Taking all the matches played in the league or group concerned, establish the 'goal difference' for each team. The score is then calculated by dividing the 'goal difference' of each team by the number of matches played by each team; all fractions to count as half.
 - If this produces a tie in a tournament in which matches are to be played for a win then a similar calculation will be made taking account of 'goals scored'.
 - If two teams remain tied then Paragraph 5 will apply.
 - b. **If started but not completed:**
 - The score will be calculated by taking the score of each team at the time the match was abandoned. These scores are then each divided by the number of chukkas completed and multiplied by the total number of chukkas due to be played in the match to give the score; all fractions to count as half.
 - If the teams were equal when the match was abandoned, each team will be awarded half a point.
8. **TOURNAMENT PLAYED BOTH OPEN AND HANDICAP.** If the tournament is played both open and on handicap:
 - a. **Scoreboard.** The scoreboard should show the 'Open' score with any goals awarded on handicap displayed separately below the appropriate team.
 - b. **Last Chukka.** Matches must be played for a win in both the open and handicap sections. Although there may be a win in one section at the end of 7 minutes in the last chukka, play may have to continue in order to get a win in the other section. When the result of one section has been established, that result will not be altered by the subsequent play that may have been required to get a match result in the other section. It is important that umpires and time-keepers are briefed on this requirement.
 - c. **Order of Merit.** A team that wins both the open and handicap section in a league must go for the open final. When the order of merit is being calculated, all matches are counted. If two or more teams are tied on points, only matches between the tied teams are counted as in Paragraph 2b above, except that a team that has won the open section of the league shall not be considered as a tied team.
9. **CANCELLATION.** If the result of a league is known before the last matches are played and the result cannot be influenced by those matches, they may be cancelled provided the Tournament Committee, the club where the matches were due to be played and both team captains all agree.

EXAMPLES TO ANNEX D

Example A - League with no teams tied on points

League 1	A team	B team	C team	No team	Win/Lose	Points	Goals Scored	Goals Against	Goal Difference	Place
A team		7 - 8	12 - 7		LW	2	19	15	+4	2
B team	8 - 7		9 - 4		WW	4	17	11	+6	1
C team	7 - 12	4 - 9			LL	0	11	21	-10	3
No team										

Example B - League with two teams tied on points

League 1	A team	B team	C team	D team	Win/Lose	Points	Goals Scored	Goals Against	Goal Difference	Place
A team		10 - 7	7 - 9	6 - 7	WLL	2	23	23	0	4
B team	7 - 10		11 - 6	9 - 8	LWWW	4	27	24	+3	1
C team	9 - 7	6 - 11		4 - 5	WLL	2	19	23	-4	3
D team	7 - 6	8 - 9	5 - 4		WLW	4	20	19	+1	2

B team and D team are tied on points. B team won the match between them so go first. Likewise C team beat A team so they go into third despite the fact that they have a worse goal difference.

Example C - 4 teams grouped in 2 sub groups.

Sub Group 1	A team	B team	C team	D team	Win/Lose	Points	Goals Scored	Goals Against	Goal Difference	Place
A team			9 - 6	7 - 6	WW	4	16	12	+4	1
B team			6 - 5	7 - 4	WW	4	13	9	+4	2
Sub Group 2										
C team	6 - 9	5 - 6			LL	0	11	15	-4	3
D team	6 - 7	4 - 7			LL	0	10	14	-4	4

Teams play across. A team and B team each have four points so go straight to goal difference and the scores are still tied; go to goals scored and A team go first and B team second. Likewise C team go third and D team fourth.

Example D - 4 teams grouped in 2 sub groups.

Sub Group 1	A team	B team	C team	D team	Win/Lose	Points	Goals Scored	Goals Against	Goal Difference	Place
A team			5 - 4	3 - 4	WL	2	8	8	0	2
B team			4 - 10	4 - 7	LL	0	8	17	-9	4
Sub Group 2										
C team	4 - 5	10 - 4			LW	2	14	19	+5	3
D team	4 - 3	7 - 4			WW	4	11	7	+4	1

Teams play across. D team goes first with 4 points. Team A and C are tied on points. As A team beat C team they go second with C team third.

Example E - 4 teams in a league with 3 teams tied on points.

League 1	A team	B team	C team	D team	Win/Lose	Points	Goals Scored	Goals Against	Goal Difference	Place
A team		10 - 5	6½ - 10	8 - 0	WLW	4	24½	15	+9½	1
B team	5 - 10		9 - 3	7 - 3	LWWW	4	21	16	+5	2
C team	10 - 6½	3 - 9		3 - 1	WLLW	4	16	16½	-½	3
D team	0 - 8	3 - 7	1 - 3		LLL	0	4	18	-14	4

Three teams tied on points so the 4th team (D team) is discounted and the scores are recalculated taking into account only the scores between the remaining three teams. See below.

Example E - 4 teams in a league with 3 teams tied. Bottom team discounted.

League 1	A team	B team	C team	D team	Win/Lose	Points	Goals Scored	Goals Against	Goal Difference	Place
A team		10 - 5	6½ - 10		WL	2	16½	15	+1½	1
B team	5 - 10		9 - 3		LW	2	14	13	+1	2
C team	10 - 6½	3 - 9			WL	2	13	15½	-2½	3
D team										

All three teams are still tied on points. The team with the best goal difference goes first, the second best second and so on; thus the Order of Merit is A, B then C.

Example F - 4 teams grouped in 2 sub groups tied on points.

Sub Group 1	A team	B team	C team	D team	Win/Lose	Points	Goals Scored	Goals Against	Goal Difference	Place
A team			8 - 6	5 - 8	WL	2	13	14	-1	3
B team			7 - 9	5 - 4	LW	2	12	13	-1	4
Sub Group 2										
C team	6 - 8	9 - 7			LW	2	15	15	0	2
D team	8 - 5	4 - 5			WL	2	12	10	+2	1

All four teams are tied on 2 points. Some but not all of the teams have played each other so which team won the match between them is discounted so go to goal difference (Paragraph 3). Thus the order of merit is 1st D team with plus 2, 2nd C team on 0 and as A and B teams are equal on minus one, go to goal scored and A team comes 3rd with 13 and B Team 4th with 12.

Example G - 5 teams in a league each playing only two matches.

League 1	A team	B team	C team	D team	E team	Win/Lose	Points	Goals Scored	Goals Against	Goal Difference	Place
A team		9 - 4			5 - 8	WL	2	14	12	+2	3
B team	4 - 9			8 - 7		LW	2	12	16	-4	4
C team				5 - 9	3 - 7	LL	0	8	16	-8	5
D team		7 - 8	9 - 5			LW	2	16	13	+3	2
E team	8 - 5		7 - 3			WW	4	15	8	+7	1

E team goes first with 4 points, A, B and D teams are tied on 2 points each, so go straight to goal difference (Paragraph 3). Thus D comes 2nd, A 3rd, B 4th on goal difference and C 5th on 0 points.

Example H - 3 leagues of 3 and one of 4. There is to be a main and subsidiary semi final.

League 1	A team	B team	C team	No team	Win/Lose	Points	Goals Scored	Goals Against	Goal Difference	Place in League	Overall Place
A team		7 - 6	7 - 5		WW	4	14	11	+3	1	2
B team	6 - 7		8 - 6		LW	2	14	13	+1	2	6
C team	5 - 7	6 - 8			LL	0	11	15	-4	3	11
No team											
League 2											
D team		7 - 5½	7 - 4		WW	4	14	9½	+4½	1	1
E team	5½ - 7		4½ - 5		LL	0	10	12	-2	3	10
F team	4 - 7	5 - 4½			LW	2	9	11½	-2½	2	8
No team											
League 3											
G team		4 - 2	2 - 3		WL	2	6	5	+1	1	4
H team	2 - 4		8 - 5		LW	2	10	9	+1	2	7
J team	3 - 2	5 - 8			WL	2	8	10	-2	3	9
No team											

League 4	K team	L team	M team	N team							
K team		3½ - 12	7½ - 7	3 - 3½	LWL	2	14	22½	-8½	3	-
L team	12 - 3½		6 - 4	5 - 6½	WWL	4	23	14	+9	2	-
M team	7 - 7½	4 - 6		6 - 6½	LLL	0	17	20	-3	4	-
N team	3½ - 3	6½ - 5	6 - 6½		WWW	6	16½	14	-2½	1	-

To establish the order within the league and which teams therefore qualify for the knock out phase, all matches are counted. The next step is to reduce League 4 to three teams by eliminating the bottom team and recalculating the score as shown following in order to produce an order of merit across the leagues.

League 4	K team	L team	M team	N team							
K team		3½ - 12		3 - 3½	LL	0	6½	15½	-9	3	12
L team	12 - 3½			5 - 6½	WL	2	17	14	+9	2	5
M team											
N team	3½ - 3	6½ - 5			WW	4	10	8	+2	1	3

The winners of each league go into the main semi final: D team go 1st, A team 2nd, N team 3rd and H team 4th. In the subsidiary semi final, L team go 5th, B team 6th having been equal on points and goal difference but scored more than G team who go 7th and F team go 8th. N team and L team will qualify in their original league placings even if their positions change following equalisation.

Example J - The tournament has a group of 4 and 3 leagues of 3. There is to be a main and subsidiary semi-final.

Sub Group 1	A team	B team	C team	D team	Win/Lose	Points	Goals Scored	Goals Against	Goal Difference	Place in League	Overall Place
A team			8½ - 6	7 - 6	WW	4	15½	12	+3½	2	5
B team			6 - 5	7 - 4	WW	4	13	9	+4	1	3
Sub Group 2											
C team	6 - 8½	5 - 6			LL	0	11	14½	-3½	3	10
D team	6 - 7	4 - 7			LL	0	10	14	-4	4	11
League 1											
	E team	F team	G team	No team							
E team		6 - 8	7 - 3		LW	2	13	11	+2	2	6
F team	8 - 6		8 - 4		WW	4	16	10	+6	1	1
G team	6 - 7	4 - 8			LL	0	7	15	-8	0	13
No team											
League 2											
	H team	J team	K team	No team							
H team		4 - 5	7 - 5		LW	2	11	10	+1	1	4
J team	5 - 4		4 - 6		WL	2	9	10	-1	3	9
K team	5 - 7	6 - 4			LW	2	11	11	0	2	8
No team											
League 3											
	L team	M team	N team	No team							
L team		4½ - 7	5½ - 8		LL	0	10	15	-5	3	12
M team	7 - 4½		3 - 5		WL	2	10	9½	+½	2	7
N team	8 - 5½	5 - 3			WW	4	13	8½	+4½	1	2
No team											

Note 1. The winners of each league/group go into the main semi finals. In this case there are 3 teams on 4 points so the order of merit for those 3 is decided on goal difference: 1st F team, 2nd N team, 3rd B team. H team is 4th as they won their league. Note that A team who won both their matches and has 4 points is not in the semi-finals. Then, taking the seconds in each league/group, A team is 5th with 4 points. There are then 3 teams placed 2nd with 2 points so the order of merit is again decided on goal difference: E team 6th, M team 7th and K team 8th. Also note two teams from the group and one from each league do not get another game.

Note 2. The Tournament Committee may include in the schedule a special ruling which in this case might read 'Should the worst 2nd best team in the leagues be below the third best team in the group in the order of merit then the team in the group will go forward to fill the eighth place.' In this example the order of merit stands as the third best team in the group (C) had 0 points whereas the worst second in the league (K) had 2 points.

ANNEX E - STATUS GUIDELINES FOR PLAYERS

OVERSEAS SPONSORED PLAYER

1. An 'overseas sponsored player' (OSP) is a sponsored player who is not entitled to claim employment rights within the European Union.
2. The conditions for Official HPA tournaments lay down how many OSPs are allowed to play in different levels of polo.
3. Although a team manager and club should in the first place seek clarification where there is any doubt about a player's status, it is the responsibility of the individual player to confirm his status. If a sponsored player from overseas wishes to apply for registration as a non overseas sponsored player, he must obtain and complete an HPA status application form and provide all the documentation and information requested such as the following (this list is not intended to be exhaustive).

4. Questions:

- a. His date and place of birth
- b. His nationality
- c. Each parent's place of birth and nationality
- d. His principal place of residence and that of the members of his family
- e. The amount of time, which the player has resided within the UK in the last 10 years
- f. His present occupation/employment and the location of the same
- g. Where polo was learnt
- h. Whether he is or was a member of the British Armed Forces
- i. Whether he is or was a member of the British Pony Club
- j. Whether he is in full-time education at a duly recognised school within the UK or Ireland

The answers to the questions will be used in interpreting the guidelines set out below.

The guidelines are only flexible aids to assist the HPA in arriving at a decision and are not rigid rules, or legally binding.

5. Guidelines: Overseas Player

- a. A player will prima facie not be considered an overseas player if:
 - (i) he is entitled to employment rights within the European Union through having the nationality of a country which is member of the European Union or that of a country which has a relevant Trade Association with the European Union.
 - (ii) he has held a registered handicap within the New Zealand or Australian Polo Associations for three years.
 - (iii) he is a national of a Member State of the Commonwealth and either he or both his parents were born in the U.K. or Ireland and his principal place of residence has been either Britain or Ireland for at least 4 years in the last 6 prior to application and this is likely to continue to be his principal place of residence; or
 - (iv) he is a national of a Member State of the Commonwealth and neither of his parents were born in Britain or Ireland and his principal place of residence has been Britain or Ireland for at least 6 years and this is likely to continue to be his principal place of residence;
- b. If he does not have a British, Irish or Commonwealth passport but does meet the residential qualifications in (a) (iv) above, he may make an application to the Chief Executive to obtain the Stewards' permission to be considered a special case.

- c. Once a player has been accepted by the HPA not to be an 'overseas player', he will not normally be so considered in the future, save:-
 - (i) if there were conditions attached to this status being granted and he is no longer satisfying them.
 - (ii) if his circumstances change.
- d. A principal place of residence will be his only home but if he has more than one home it is where he mostly lives. Residence for 9 months in a year in a particular country will normally be treated as sufficient to establish a principal residence in that country.

6. Guidelines: 'Overseas Sponsored Player'

- a. An 'overseas player' as defined above shall be considered to be 'sponsored' if he accepts any financial assistance or benefit or advantage in whatever form, cash or kind, or in money or money's worth for playing polo in the European Union, other than under circumstances expressly permitted on each occasion by the HPA. Such permission will normally only be granted by the HPA to those deemed by the HPA to be bona fide amateur non-sponsored overseas players.
- b. The HPA reserves the right to refuse permission unless and until they are completely satisfied that the case is a bona fide one. They will look at all the surrounding circumstances including ownership of the ponies hired and the terms of hiring.
- c. The following will not normally be considered to be a sponsored player:
 - (i) He is a national of Australia or New Zealand and has been registered as a member of his own polo association for 3 years or is resident in England.
 - (ii) Any overseas patron;
 - (iii) Any son or daughter of an overseas patron;
 - (iv) Any player in full-time education at a duly recognised school in the UK or Ireland and under 18 years on 1 January of the year concerned.

HOME GROWN PLAYER

A Home Grown Player is a player who, irrespective of his nationality or current age, was an Associate or Junior Associate Member of the HPA for a period, continuous or not, of three entire seasons during his "Development Period".

"Development Period" means a player's first five years playing polo. This will generally be taken to start with the season in which a player is awarded his first handicap as a polo player, either by the HPA or by an equivalent overseas polo authority, and to include the four seasons immediately following.

For the avoidance of doubt, a player who first registers with the HPA will usually be an 'S' or -2, and a player with a handicap of 0 or higher from an equivalent overseas polo authority will generally be considered to have already completed at least three years of his five year "Development Period" and will therefore be precluded from qualifying as a Home Grown Player.

ANNEX F - EXAMPLES TO THE RULES

Rule 33d

Two opposing players riding on the exact LOB and simultaneously making a play on each other, whether they are following or meeting the ball, have the ROW over a single player coming from any direction.

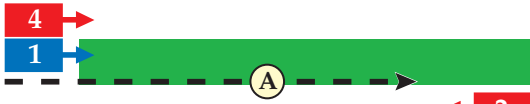


Fig i. Red 4 and Blue 1 are on the exact LOB and have the ROW over all other players. Red 2 has no play. If Red 4 starts to make a play on Blue 1 when Red 2 is already established to meet Blue 1, then Red 4 will have fouled.

Rule 33e

A player on the exact LOB, either following (Fig ii) or meeting the ball (Fig iii) on his offside, has a ROW over all other players except as in 33c above.

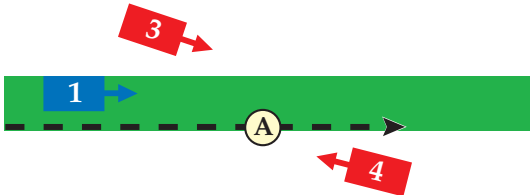


Fig ii. Blue 1 is on the exact LOB and has the ROW over all other players except two players meeting on the exact LOB.

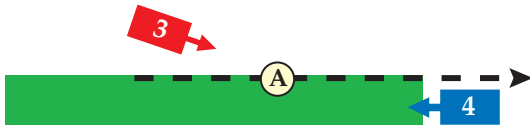


Fig iii. Ball is hit to A. Blue 4 is meeting on the exact LOB and has ROW.

Rule 33f

Two players riding in opposite directions on the exact LOB have an equal ROW provided that both take the ball on their offside.



Fig iv. Red 3 is on the exact line following the ball and has the ROW but Blue 4 would still have the right to meet him right hand to right hand as he also is on the exact line.

Rule 33g

When two or more players ride in the same direction, the player who has the ROW is the one who is at the least angle to the LOB (Fig v) provided that he does not contravene rule 32b (ii) if he plays the ball on his nearside (Fig vi). If the players are at equal angles, the player that has the LOB on his off side has the ROW (Figs vii and viii). Any player or players riding in the same direction that the ball is travelling or has travelled has a ROW over any player or players approaching from the opposite direction (Fig ix, x and xi) unless the player or players are on the exact line as in 33c and 33d.

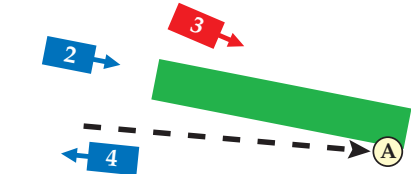


Fig v. Blue 4 hits long backhand to A. Blue 2 has ROW over both Red players.

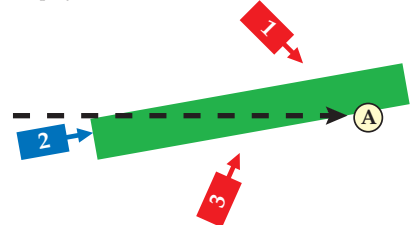


Fig vi. Blue 2 is riding at a lesser angle and has the ROW to take the ball on his offside. Red 3 could make a legitimate ride off or a nearside play. Red 1 has no play as he is at too acute an angle to ride off. If Blue 2 places himself to take the ball on the nearside, he endangers Red 3 and contravenes Rule 32b(ii).

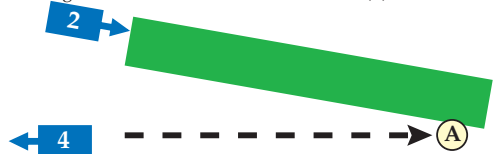


Fig vii. Blue 4 hits backhand to A. Blue 2 and Red 3 appear to be at equal angles. Blue 2 has the LOB on his offside and has the ROW.

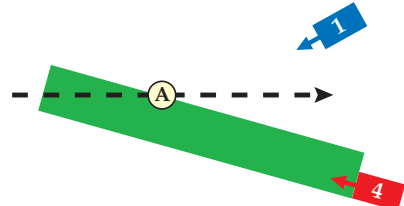


Fig viii. Red 4's approach is at the lesser angle to the LOB and he has the ROW. If Blue 1 was considered to be approaching at an equal angle, Red 4 still has the ROW because the LOB is on his offside.

Rule 33g continued

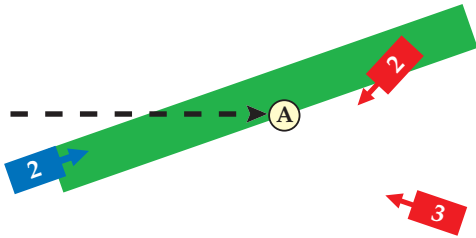


Fig ix. Blue 2 has the ROW as he is travelling in the same direction as the ball. If Red 3 was on the exact LOB, he would have the ROW on meeting (see Rule 33b) Red 3 may attempt to hook Blue 2's stick. If Blue 2 takes the ball on the near side, he will lose his ROW and foul because he endangers Red 3 and 2.

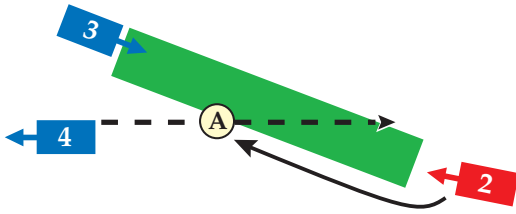


Fig x. Blue 4 backs the ball to A. If Red 2 is not on the exact line of the ball, then Blue 3 has the ROW as he is travelling in the direction that the ball was hit. To make a play without fouling, Red 2 must move to A without endangering or impeding Blue 3 who has the ROW.

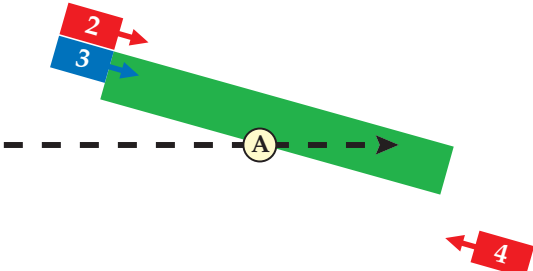


Fig xi. Blue 3 and Red 2 have the ROW and Red 4 has no play. If Red 4 was meeting on the exact LOB, Red 4 would have ROW.

Rule 33h

A player in possession of the ball may check to avoid what would have been a legitimate ride off but if an opponent is then able to enter the ROW safely with the ball ahead of him, the player following cannot ride into that player from behind and only has a play on his nearside (Figs xii and xiii.)

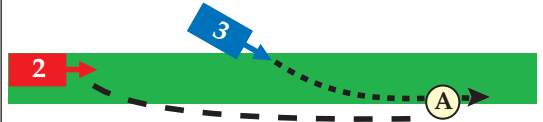


Fig xii. Red 2 has possession and hits to A. Red 2's ROW is as shown. Blue 3 may enter the ROW provided he does not endanger or impede Red 2. Red 2 must not ride into Blue 3 (including riding him off from behind) and only has a play on his nearside.

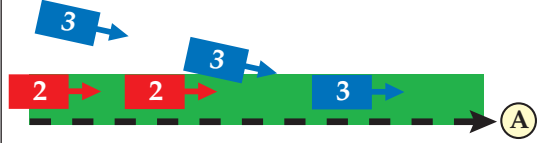


Fig xiii. Blue 3 goes to ride off Red 2 legitimately. If Red 2 checks to avoid a legitimate ride off, he risks surrendering the ROW if Blue 3 can then enter the ROW safely. He then only has a play on the nearside.

Rule 33i

If a player hits the ball past the offside stirrup of an opponent who is on the LOB and travelling at the same speed, the opponent has the right to play the ball on his offside. The player who hit the ball, or a player following, cannot ride into the opponent from behind and only has a nearside play.



Fig xiv. Red 2 has possession and hits the ball to A. Red 2's ROW is as shown. Blue 3 may play the ball once it has passed his stirrup, providing he has not slowed down to wait for the ball. Red 2 must not ride into Blue 3 from behind but must take the ball on the near side.

Rule 33j

The player with the ROW is entitled to play the ball on his offside. If a player switches to play the ball on his nearside he loses the ROW and has fouled if he endangers another player or causes another player to check or pull away.



Fig xv. Blue 1 has the ROW as shown. Blue 1 fouls if he switches to take the ball on his nearside and endangers Red 3 or causes Red 3 to have to check.

Rule 33k

A player may lose the ROW if, having hit the ball, he deviates from the exact LOB.

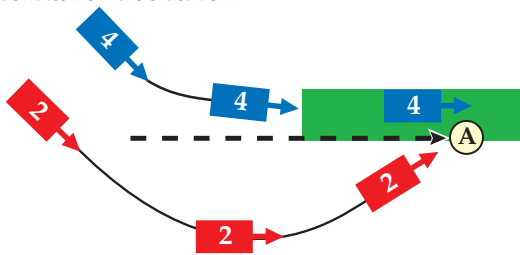


Fig xvi. If Red 2 hits the ball under the neck to A but does not manage to stay on the exact LOB then the player on the lesser angle to LOB has the ROW. Blue 4 is at a lesser angle to the LOB and has the ROW. Red 2 can play the ball on the near side, or make a legitimate ride off or hook on Blue 4.

Rule 33o

The player with the ball who chooses to stop or slow down to walking speed once he has been challenged but is neither being blocked nor ridden off may then tap the ball only once, in any direction, after which he must immediately leave it, accelerate with it or hit it away (Fig xvii). Should he leave it for another member of his team to take, that player, whether challenged or not, must run with it or hit it away without the option of a tap. The opponent is considered to be challenging if he is within two horses' length on either the offside or the nearside of the player with the ball. A Penalty 5a will be awarded for breach of this rule (but see Rule 40e if a defender is in breach within his own 60 yard line). An upgrade may be given for consistent abuse. A player who chooses to tap the ball under the pony of a challenging player will foul if he rides into the challenging player other than by a legitimate ride off.

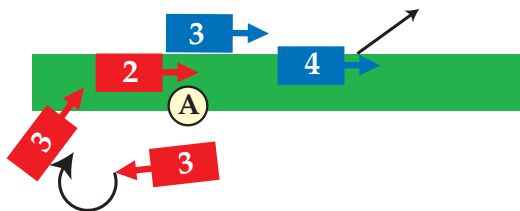


Fig xvii. Red 2 has possession; Blue 3 is in a defensive position between Red 2 and the goal. Blue 4 must clear the ROW and Red 2 must continue to move the ball. He may tap the ball only once and must then leave it, accelerate with it or hit it away. If Red 2 hits to Blue 3, Blue 3 must clear the new ROW immediately without making a play on the ball. It is not a play if the pony kicks the ball. If Red 2 has tapped the ball once then the next play, or that of any member of his team such as Red 3 circling to back him up, must be to accelerate with it or hit it away.

Rule 35a,b

A player may not ride in a manner which creates danger to another pony, player, official or any other person or which places the welfare of his own pony at undue risk. A player must ride off shoulder to shoulder and may push with his arm above the elbow provided the elbow is kept close to the side. In particular, a player may not:

- Ride off at such an angle or speed as to be dangerous to a player or his pony.
- Ride into an opponent in front of or behind the saddle.

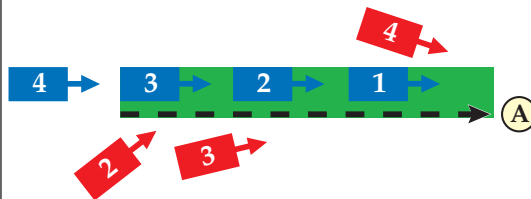


Fig xviii. Blue 4 hits ball to Blue 1 who is on the line of the ball and has the ROW. Red 4 can make a legitimate ride off on Blue 1.

Red 3 can play the ball on the nearside, (provided he does not impinge the ROW before or after playing his shot), or he can hook Blue 1 or Blue 2 if they are playing a shot, or ride off Blue 1 or Blue 2 legitimately; he can not ride in behind the saddle or from behind, and must be careful not to sandwich (Rule 35d).

Red 2 is at too severe an angle to ride off Blue 3 or 4 legitimately.

Rule 35c

A player may not ride an opponent across or into the ROW of another player at an unsafe distance.

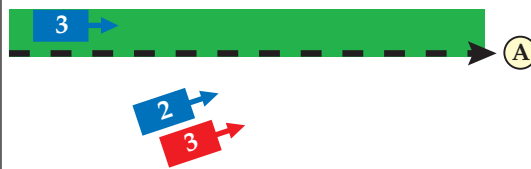


Fig xix. Blue 3 has the ROW. If Red 3 rides Blue 2 into the ROW, thereby impinging or endangering Blue 3, Red 3 has fouled.

Rule 35d

A player may not ride off an opponent who is already being ridden off by another member of the team (sandwiching). However, it is not a foul for a player to hook legitimately an opponent's stick while the opponent is being ridden-off by a team mate of the player hooking.



Fig xx. Blue 1, who has the ROW, is already being ridden off by Red 3. If Red 4 rides off Blue 1, it is a sandwich. However, Red 4 can hook Blue 1 when he is making a shot. If Red 3 pushes Blue 1 across the line to make contact with Red 4 it is also a foul against Red.

Rule 35g

A player may not ride his pony from behind into the forehand or backhand stroke of an opponent.

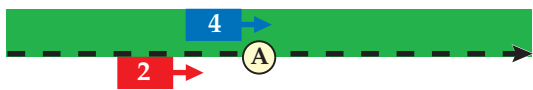


Fig xxi. Red 2 can not ride from behind into the forehand or backhand stroke of Blue 4.

Rule 35h

A player may not use his pony to spoil a stroke by riding over the ball and into an opponent who has already started the downward swing of a full forehand or backhand stroke.

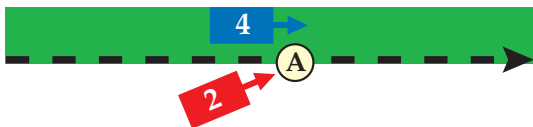


Fig xxii. Red 2 can not ride over the top of the ball if Blue 4 has already started the downward swing of a full forehand or backhand stroke.

Rule 36a

For a player to make a legitimate hook, the following conditions must apply:

- (i) He must be on the same side of his opponent's pony as the ball (Fig xxiii), or in a direct line behind (xxiv and xxv), and his stick must be neither over or under the body or across the legs of an opponent's pony.
- (ii) All of his opponent's stick must be below the level of his opponent's shoulder.
- (iii) His opponent must be in the act of striking the ball.



Fig xxiii. Red 2 may only hook if Blue 4 is making a stroke and all of Blue 4's stick is below the level of his shoulder.



Fig xxiv. Red 2 may hook Blue 4 if Blue 4 is making a stroke and Red 2 is directly behind.



Fig xxv. Should Red 2 not be directly behind, then he will foul

INDEX TO RULES 2012

A ccident to Player	Rule No 29	G round:	Rule No	P onies:	Rule No
Accident to Pony	30	Private	11g	Drugs	4n
Advantage Rule	26a	Size of	11c, Annex A	Equipment	4f
Angles, equal	33f	Unsafe to Play	5d, 15c	Muzzles	4k
Appealing	1b	H andicap:		Number of chukkas	4l
Attacker Hits Behind	24	Calculation	1k	Studs	4i
Ambulance Requirement:		Raised	1f	Umpire	1j, 4m
Matches	10	Substitution	2	Unshod	4i (vi)
Ponies	4o	H eadgear:		Vaccination	4d
B all:		General	3a	Water	4k
Carrying	36c	Loss of	28b	Welfare	4, 30a
Dead	15b(iii), 32a	Helicoptering	36b(vi)	P ony:	
Hit out	8c, 22, 24	Hooking	36a	Disqualified	4g
Line of	32a	I njury:		Ordered off	30a
Size of	12	To Player	29	R eferee	7, Annex B
Trodden in/Split	31a, 31b	To Pony	30	Report Forms	6
B ell:		Interval, between play	15e, 17a	Riding Off	35
Sounding of	16a, 16b	L ine of Ball	32a	Right of Way	32b, 33
B oards:	11f, Annex A	Line Up:	14b	Rough or Abusive Play	37
C hecking	33a, 33g, 33o	Wrong	19	S afety Zone:	
Chukkas:		M atch:		Size of	11d, Annex A
Duration of	15d	Duration of	15a	Access during play	13b
Clock, running and stopping	15b	Five second rule	16c	Scorer	9
Coaching on Ground	1m	Not started	5d	Shirts	1h
Contagious Disease	4e	Unfinished	5d, 15c, Annex D	Sideline, ball hit over	22
Crossing	33a	Winning of	20d	Spurs, use of	3b, 37b
D angerous Riding	35	Medical Cover	10	Stick, misuse of	36b
Dead Ball	15b(iii), 32a	Misuse of Stick	36b	Studs	4i
Defender hits Behind	25a	Muzzles	4k	Substitution	2, Annex C
Delay, unnecessary	15f, 39d	N ot Trying	1n	T ack:	
Disabled Player	2a, 2k, 29	O fficials	5-10	Broken	26b
Drink & Drugs:		Offside	19	Dangerous	30b
Players	1b	Ordered Off:		General	4f
Drugs:		Player	40i	T eams:	
Ponies	4n	Pony	30	General	1
E nds, Changing	18	P assports for Ponies	4d	Shirts	1h
Entry to Tournament	1c	Penalties:		Technical Penalty	38
Equal angles	33f	General	38-41	Throw In	21, 40h
Equipment for Players	3	Shoot Out	Annex C	T ime:	
Equipment for Ponies	4f	Technical	38	Extra	17
Equipment Loss or Breakage	28	Personal Foul	38	General	15, 16
Extra time	16c, 17	P lay:		Timekeeper	9
F oul:		Continuous	15b(i)	Tournament Committee	5
Definition of	27a	Duration of	15	Turnout	4f
On the Bell	16d	Interruption of	26-31	U mpires:	
Personal	38	Restarting	21-25	General	7, Annex B
F ield of Play:		Rough or abusive	37	Dress	7g
Size of	11c, Annex A	Start of	14	International Matches	Annex C
Access during play	13a	Termination of	16	Ponies	1j, 4m
G ame:		P layer:		Unnecessary Delay	15f, 24e, 24f, 39d
See Match		Accident or Injury to	29	V accination of Ponies	4d
G oal:		Arriving late	2a, 2i	Veterinary Cover	4b
Disputed	20b	Concussed	29c	W ater	4k
Judges	8, Annex B	Falls off	29a	Welfare of Ponies	4, 30a
Penalty	40a	Equipment	3	Whip, use of	3d, 37a, 37b, 37d
Posts	11e, Annex A	Ordered off	40i	Winning	20d
To Score	20a			Widened Goals	11e, 17c(ii), 18c
Widened	17c(ii), 18c			Withdrawal from Tournament	1g